



Issue 145

Winter 2023

Free! Please
take one

CAMPAIGN
FOR
REAL ALE

Durham Drinker



Inside:

- Public Transport: p6
- The Autumn Statement: CAMRA comments p12
- The Surtees Story p13
- Tanfield Lea club award p16
- More Micropub Adventures p17
- Camerons pubs: the latest p19
- The Good, the Bad, and the Ugly: pub news p 20
- Grand Winter Quiz p22
- Picture Quiz p23
- Perry: A Drinker's Guide p 25



The Half Moon, Durham

Award winning traditional British pub in the heart of Durham city, with listed features including the back bar and fireplace, fitted in 1905.

A large riverside courtyard partially covered with a retractable roof down by the river Wear.

Cask Marque approved real ales, including Bass & Landlord, a member of the Timothy Taylors champion club, and included in the GBG for many years

Full sports package with 4 TVs inside and 6 outside.

Dog friendly inside & out



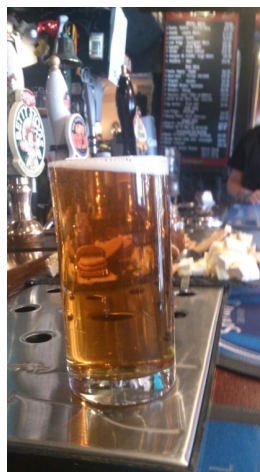
New Elvet, Durham, DH1 3AQ
0191 3741918

Pease like our Facebook page and follow us on Instagram for latest news and info.



Diary Dates:

- December 18th, Christmas party, **Station House**, North Road, Durham 7pm
- Monday January 15th 19:00, beer festival committee meeting 7pm, **Holy GrAle**, Crossgate, Durham
- Monday January 15th 19:30, Branch meeting, **Holy GrAle**, Durham,
- Wednesday January 31st, Wednesday Wander. 1pm start at the **Frog & Ferret**, Coulson Street, Spennymoor
- Wednesday, February 28th, Wednesday Wander, 1pm start at the **Butcher's Arms**, Middle Chare, Chester le Street



Hello and welcome to issue 145 of Durham Drinker.

In an effort to stave off another potential winter of discontent, chancellor (at the time of writing) Jeremy Hunt made various changes in his autumn statement that affect our beloved pubs and clubs. Some are good for the industry, while others, in CAMRA's opinion at least, either don't go far enough or represent a missed opportunity. See page 12 for CAMRA chairman Nik Antona's statement on the statement.

One way pubs can attract custom is to offer what the customer wants, but this may not always be economically viable. There are a number of pubs and clubs who'd like to either start selling real ale, or increase the number of ales that they offer – but don't have the turnover to justify potential wastage that may be incurred when using the "standard" sized containers preferred by most pubcos. Below is a list of brewers in and around the CAMRA Durham area who offer ale in pins: smaller casks that can be exhausted more quickly so that the beer doesn't "go off." Using pins gives pubs and clubs the opportunity to try real ale for the first time, reintroduce it, or double up on their offering.

In the meantime, get out there and enjoy a pint of what you fancy. It'll do you good!

Cheers, *Paul Dobson*

Caps Off	shop@capsoff.co.uk	If you think your local would benefit from this, give one of these local businesses a shout/google/email/message.
Consett	sales@consettaleworks.co.uk	
Durham	via website	
Hill Island	hillisland73@gmail.com	
Hopper House	via messenger	
Yard of Ale	yardofale@yahoo.co.uk	
Crafty Monkey	info@craftymonkey.beer	
Great North Eastern Brewing Company	hello@gneb.com	
Allendale	melissa@allendalebrewery.com	
McColl's	via website	Take your pin and they'll fill it
George Samuel	via messenger	No, but they do bag in a box of the same size
North Pier	info@northpierbrew.co.uk	They could borrow pins if available. Otherwise nines.

CAMRA Durham committee

Chairman & Public Affairs Officer: Paul Dobson

Treasurer: Sean Quilty

Secretary : Tony Dent

Membership secretary: Andy Stowell

Durham Drinker & campaigns: Paul Dobson

Apple Rep (cider) Chris Mansfield

Pubs officer: Dave Thornton

Website & Social Media: Neil Shaw

Social Secretary: Neil Cleall

Pubs Preservation: Peter Jones

Pub Promotions and Awards Coordinator: vacant

Pub Protection Officer: Peter Lawson

GBG submissions: Peter Jones

Environment Officer: Garry Halliday

Brewery Liaison Officers

Durham: Peter Jones

Consett Ale Works: Sandra Wilkinson

Hill Island: Chris Mansfield

Yard of Ale: Arthur Corner

Weard'Ale, George Samuel, North Pier, McColl's: Paul Dobson

Castle Eden: Arthur Corner

Hopper House Farm: Peter Jones

Caps Off: Paul Dobson



***Take advantage of
Durham Drinker's competi-
tive advertising rates***

***Quarter £45, half £65, or full
page £120.***

***10% Discount for taking out
one year's worth (4 issues)***

***3,000 copies distributed across
County Durham's pubs and
clubs, and anywhere else our
members are visiting. Design
service available***

Contact us at:

publications@camradurham.org.uk

pubsofficer@camradurham.org.uk

Find us at:

www.camradurham.org.uk

And Facebook, and Twitter

Welcome to Ye Old Elm Tree

Traditional pub dating back to the 1600s, with a fantastic range of five rotating real ales and real cider.

Folk nights every Monday and Tuesday, and Durham's most testing quiz on Wednesdays

Durham's self-proclaimed Best Beer Garden.

Dog friendly

10% discount on real ale for CAMRA members



THE STAPYLTON ARMS HAWTHORN VILLAGE – SR7 8SD



Comedy Nights, every month - check our Facebook page for details.

Quiz Night - Thursday

Full menu served Wed-Sat

Fantastic Sunday Lunches

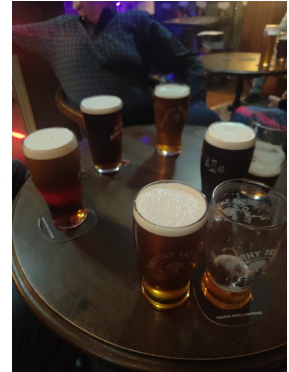


Durham CAMRA Country Pub of the Year Runner-up, 2022
0191 527 0778



All change

As the current situation with reduced bus services and the on-going industrial action at Go Ahead Northern emphasises, getting out and about is a bit of a problem. We'd been liaising with local MP Richard Holden (NW Durham) on this subject, but with his appointment as chair of the Conservative party, he's relinquishing his post of Under Secretary for Roads and Public Transport. We'd been due a follow-up meeting with him (previous meeting in April) to discuss public transport and its effect on the hospitality industry, particularly in rural areas. This baton had now passed to a neighbouring constituency and Hexham MP Guy Hopperman now fills that role. Hopefully CAMRA can continue to have meaningful discourse that helps keep the public moving and thus helping the hospitality industry get the customers it needs in these challenging times.



WETHERSPOON



The Stanley Jefferson

5 Market Place,
Bishop Auckland,
DL14 7NJ



The Horse Shoe Inn

4 Church Street,
Crook, DL15 9BG



The Grand Electric Hall

2 Cheapside,
Spennymoor, DL16 6DJ



Hanlons Citramas IPA 4.0% ABV

Hanlons Brewery, Devon. Est. 1996
This light amber-coloured seasonal beer has an aroma laden with fruity and floral notes, leading to a full, zesty flavour and a hoppy character which continues into the long, crisp finish.
Hops: Citra



Rudgate Evil Elf 4.0% ABV

Rudgate Brewery, North Yorkshire. Est. 1992
This pale golden festive ale has generous tropical fruit notes, balanced by notes of biscuit malt, resulting in a full-bodied, clean, refreshing character.
Hops: Dragon, Summit



Butcombe Chris Moose 4.1% ABV

Butcombe Brewery, Somerset. Est. 1978
This amber-red beer has a spicy and fresh character, with its initial rich flavour leading to pleasing caramel notes and a balanced bitterness, culminating in a fruity blackcurrant finish.
Hops: Bramling Cross, Challenger



Greene King Rocking Rudolph 4.2% ABV

Greene King Brewery, Suffolk. Est. 1799
This deep copper-coloured seasonal ale has a rich aroma, leading to a full-bodied flavour, with fruity and malted toffee notes, leading to a crisp bitterness in the finish.
Hops: First Gold, Goldings, Pilgrim



Hook Norton Greedy Goose 4.2% ABV

Hook Norton Brewery, Oxfordshire. Est. 1849
This copper-red seasonal beer delivers a rounded fruity aroma, leading to a rich palate and a full, dry, nutty flavour, with pleasing dark fruit hints.
Hops: Bramling Cross, Fuggles, Goldings, UK Cascade



Maxim Santastic 4.5% ABV

Maxim Brewery, County Durham. Est. 2007
This pale golden ale has generous quantities of American hops, delivering an abundance of tropical fruit aroma and a balanced flavour, with zesty lemon notes.
Hops: Cascade, Equanot, Mosaic



Portobello Ho Ho Ho 4.8% ABV

Portobello Brewery, London. Est. 2012
This deep copper seasonal ale has a smooth, balanced character of hop and malt flavours, leading to a complex finish with plenty of hazelnut and rich fruit notes.
Hops: Bramling Cross, Chinook, UK Cascade



Saltire White Christmas 4.8% ABV

Saltire Brewery, West Yorkshire. Est. 2006
This pale golden beer is lightly hopped and refreshing in character, with the addition of orange peel and coriander giving a distinctive festive twist to the flavour.
Hops: Bobek, Magnum, Saaz



Batemans Rosey Nosey 4.9% ABV

Batemans Brewery, Lincolnshire. Est. 1874
This consistently popular seasonal brew is deep amber in colour, with a seductively spicy aroma and a full-bodied character - which is full of sultana, raisin and roasted dark malt flavours.
Hops: Challenger, Goldings, Styrian



Bradfield Farmers Belgian Blue 4.9% ABV

Bradfield Brewery, South Yorkshire. Est. 2005
This popular deep red seasonal beer has a subtle blue tint in its head, leading to a distinctive winter berry flavour, resulting in plenty of fruity notes and a lasting, smooth finish.
Hops: Goldings, Target



Exmoor Exmas 5.0% ABV

Exmoor Ales, Somerset. Est. 1980
This ruby-coloured ale has a flowery, citrus hop aroma, leading to a smooth palate, with hints of biscuit malt and chocolate, balanced by its finish of spicy, fruity hop notes.
Hops: Celeia, Challenger, Fuggles, Goldings, Styrian



Coach House Three Kings 5.2% ABV

Coach House Brewery, Cheshire. Est. 1991
This copper-coloured ale has a mellow, hoppy nose, leading to a pronounced bitterness in its flavour, balanced by malt and almond overtones, plus a pleasing fruity character.
Hops: Pilgrim



The Victoria Inn, Witton le Wear

- Three cask ales, two rotating to include local and national ales
- Dogs welcome
- South facing beer garden
- B&B available
- Over fifty gins and whiskies
- Open 6 nights (not Monday)
- DL14 0AS



MASONIC CENTRE

Chester le Street



- Live Sports
- Perfect venue for parties & celebrations
- CAMRA Club of the year 2023
- Food available
- www.clsmasoniccentre.co.uk

sky sports

It's no SECRET, everyone is welcome!

TNT
SPORTS

FÁILTE



Members' Weekend, AGM & Conference

DUNDEE 2024

Scotland & Northern Ireland Branches
look forward to welcoming you back
to the Caird Hall, Dundee

Come and join us as we celebrate the
50th Anniversary of CAMRA in Scotland



26-28 April 2024

FIND OUT MORE AND REGISTER AT:
camra.org.uk/members-weekend-agm-conference



Campaign
for
Real A|e

CITY HOTEL, Durham

84 New Elvet,

DH1 3AQ

THE CITY BAR & HOTEL

0191 384 5325

real ale and rooms

sky **SPORTS**

BT Sport

sports TV & cocktails

10 Value for money in a very comfortable, clean & cosy room. The owners & staff really care about you

Wed, Mar 2, 2022 2:16 PM

Cleanliness 10 Comfort 10

Location 10 Facilities 10

Staff 10 Value for money 10



10 great reasons to join CAMRA

1 CAMPAIGN
for great beer, cider and perry

2 Become a
BEER EXPERT

3 Enjoy CAMRA
BEER FESTIVALS
in front of or behind the bar

4 GET INVOLVED
and make new friends

5 Save
YOUR LOCAL

6 Find the
**BEST PUBS
IN BRITAIN**

Get great
**7 VALUE FOR
MONEY**

8 DISCOVER
pub heritage and the
great outdoors

Enjoy great
9 HEALTH BENEFITS
(really!)

10 HAVE YOUR SAY

What's yours?

Discover your reason
and join the campaign today:

www.camra.org.uk/10reasons



Campaign
for
Real Ale

CAMRA says the chancellor should have cut tax specifically on pints in pubs to boost pub-going



Commenting on what the recent Autumn Statement means for pub-goers, pubs, and breweries CAMRA Chairman Nik Antona said:

Extending the 75% discount on business rates bills for pubs in England for another year beyond next April is very much welcome – and much needed for pubs facing rising prices and the impact of the cost-of-living crisis.

The Chancellor admitted that temporary measures like this couldn't go on forever, so it is vital that the Government urgently reforms the grossly unfair business rates system which penalises pubs and puts their future at risk.

CAMRA is calling on the Scottish and Welsh Governments to commit, now, to offering similar help for pubs with the burden of business rates. We'd also like to see the UK Government find a way to help with business rates for the beer and pub sector in Northern Ireland if there continues to be no Executive ministers in post to do so.

Freezing all alcohol duty until August 2024 is certainly to be welcomed. However, this is a missed opportunity to give targeted help to protect the nation's pubs, social clubs, and taprooms by cutting tax on draught beer and cider served in pubs instead of an across-the-board freeze in all alcohol duty.

Reducing the tax burden specifically on pints in pubs must be extended in the future to keep pub-going affordable and to help keep pubs open and at the heart of both community life and local economies by giving them a fighting chance of competing against cheap supermarket alcohol.

The Surtees Arms, Ferryhill Station

Pub and brewery

For some obscure reason my family buy me books on beer and pubs for Christmas, although they sometimes lie unread in a box in the bathroom. One day while busy on the loo, I looked inside (the box) and came across the CAMRA publication “Great British Pubs” by Adrian Tierney Jones. There, to my surprise, were listed two relatively local pubs, the **Rat Race** in Hartlepool (see DD 139, summer 22) and the **Surtees Arms** in Ferryhill Station, it being listed as a great community pub. The Surtees has been voted Durham CAMRA pub of the year on numerous occasions as well as Regional pub of the year, and also has its own brewery: The Yard of Ale, so I thought it needed some more attention.

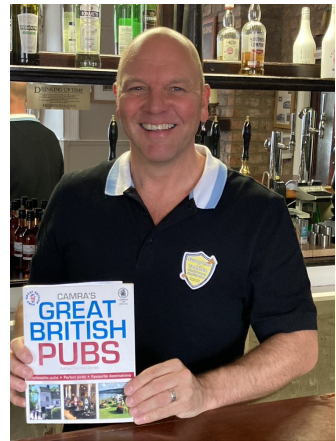


The pub was built in 1872 when Ferryhill Station village was built to house the miners who worked in Mainsforth Colliery. The pit was worked from 1872 until 1877 when it closed due to flooding and falling demand for coal exports, but in 1900 it was reopened and remained so until 1968 when the flooding from closed mines to the west rendered it unprofitable. At its height in 1940 it employed 2,249 workers. Norman Cornish, the pitman painter worked in the pit from 1962-68. As the name suggests the village also had a station on the main east coast line, although it closed in 1970.

The pub is named after the Surtees family who lived in Mainsforth Hall, the most famous being Robert Surtees 1779-1834 who wrote a four volume History of Durham, the last volume being published after his death in 1840. The hall was demolished in the 1960s and the gates are the only reminder, with a plaque adjacent to them to remind passers-by of its former glory.

The pub was built by Forster’s brewery of Bishop Middleham (see D 137, autumn 21), which was bought by Newcastle breweries in 1910. When I moved

into the area in 1984 it was a Vaux house but became a free house with Vaux's demise in 1999, and in 2007 Alan and Susan Hogg became the owners - a graduate engineer and a nurse. Then in 2008 after a three day course at Brewlab in Sunderland they launched their own brewery, The Yard of Ale – and the 2.5 barrel plant is housed behind the pub. Alan and Sue run the pub very much as a team, Alan doing the brewing, Susan the accounts and the famed Sunday roast. Regular beer festivals, featuring their own ales plus a variety from across the land, are held and there's a bar, lounge with a pool table, and a restaurant in the deceptively spacious building.



The brewery has previously used hops grown on local allotments, and produces four regular beers, One Foot In The Yard, a dark gold with an ABV of 4.5 a fruity and caramel flavoured beer, Best By Yards, a full-bodied 4.3% malty bitter, Yard-bird, a 4% session bitter, and Surtees Gold, a slightly sweet golden ale at 3.7%, as well as a series of occasional brews. The brewery has a score of free trade outlets, one of which is **Three Horse Shoes** at Running Waters on A181 three miles SE of Durham city, and another the **Welcome**, in Alan's home town of Bishop Auckland.



Five years ago Ferryhill Station, despite its relatively small population, had a thriving pub and club scene, with three pubs **The Eldon Arms** (Sam Smiths), the **Commercial** (a free house) and **The Surtees**, and three clubs, but at present it's down to one of each.

In addition to three regular real ales and many "occasionals" the brewery produces brewery conditioned Pilsner, and a keg beer called Go with the flow.

So get yourself over to the **Surtees Arms** on Chilton Lane in Ferryhill Station which is open from 4pm during the week (closed Mondays) and 12-11pm weekends. Pint and a Sunday roast, anyone?

TO THE WORKERS

THERE ARE STILL SOME FIRES
BURNING BRIGHT IN CONSETT

THE GREY HORSE

HOME OF



The Grey Horse, 115 Sherburn Terrace, Consett, Co. Durham, DH8 6NE.
Telephone: 01207 591 540 www.consettaleworks.co.uk



follow us

National award for Tanfield Club



Hot on the heels of being named the Club Journal publication's Club of the Month for September, which put it in the running for the CIU's Club of the Year award, **Tanfield Lea Working Men's and Community Club** (to use its full title) was nominated by CAMRA Durham for another honour: in recognition of an individual who has done great work in promoting real ale in a club, and the nomination was successful.



Kay Drummond of the club is one of three recipients of the new Club recognition (in association with CAMRA) award. The award was presented at the Club Mirror awards in Leicester on November 22nd, and recognises, on CAMRA's behalf, the amount of effort that has gone into promoting real ale in the club.

Here's what we said in our nomination:

Dedication, over many years, to providing and promoting real ale in an area where it is scarce. Recently awarded CIU "club of the month" for September, it's now in the running for a national award, and Kay says that providing cask ale is a "real labour of love...and a driver of trade.." She hosts an annual beer festival, and constantly promotes real ale, which is sourced from both local breweries and smaller ones across the land, concentrating on independent concerns. There's always at least one interesting and little-known brew available, and this has proved vital in introducing customers to real ale in an environment not known for the product. The club is also very community-based, and hosts numerous charity events throughout the year, adding the word "community" to its name this year to celebrate its centenary."

Another award to add the club's already impressive collection. Many congratulations.

More Micropub Adventures

As we've treated you to some Micropub Adventures in areas neighbouring CAM-RA Durham, we thought it about time to let you know how our intrepid traveller got in in Durham itself...

A short bus journey out of town brought me to an industrial estate in Bowburn, where **Durham Brewery** have been brewing since 1994, making it one of the oldest and most established breweries in the North East. A taproom and shop is located opposite the brewery and is packed full of bottles, mini kegs, and more - including sweets, spirits and other items from local suppliers.



There was a choice of two beers available on the bar, so I tried both – first **Meraki**, a Mosaic IPA at 4.4%, followed by **Hazy State of Mind**, an Idaho unfiltered DIPA at 5.9%. Both really tasty and well balanced beers. It was great to meet owner Elly, who has been running the brewery since 2020 and it's so nice to meet and chat to someone so passionate about beers and how they taste. There was just time for a quick tour around the brewery and the impressive bottling setup they have there.

Another bus out from the centre of Durham towards Gilesgate took me to craft



bar and bottle shop which opened in 2018 called **The Hop Knocker**, owned by a friend of mine – Ben. It's a really great bar with lots of choice to drink in or take away, a very relaxed setting with lots of comfy seating, and up of 12 keg lines (1 being a cider), alongside a massive selection of cans and bottles, varying in styles and including a large amount of foreign bottles. I started with **Black Grape**, a tart sour beer from **Yonder Brewing**, before moving onto a can from **Brew York**, "**When Lemons Give you Slime**", a tart Lemon and Lime sour beer.

My next call was back in Durham Centre, on Crossgate, a slight uphill walk from the centre. **The Holy Grale** was formerly a board games café, and it's a really

quirky bar which utilises a variety of different seating inside which looks amazing. There's a fantastic selection of snacks and crisps, one of the largest I have seen, and a great selection of drinks, with 12 keg beers (along the back wall) alongside 2 cask beers and a range of ciders. On top of this a number of fridges provide lots of cans and bottles to drink in or take away. I went with a **Vault City** sour, **Black Velvet**, a delicious jet black dessert sour.



My next call was on the way to the Railway Station, **the Station House**. This was opened in December 2015 by a couple who are passionate about beer and cider and wanted to create somewhere they would want to drink in themselves. It has won numerous awards and was runner up in CAMRA's National Pub of the Year 2022. There's a great selection of beers, with 4 casks, 4 ciders, and a range of kegs. A fridge with beers and ciders is also available. All draught drinks are dispensed from a small serving hatch to the left as you walk in. A really good idea that works really well. I started with **Incredible**



Pale Ale from Norwich based **Fat Cat Brewing Company**, a delicious American Pale Ale and followed with **Jammin** from **Fyne Ales**, a tart and fruity session sour packed with blackcurrant, raspberry and blueberry.

My last call of the night before getting the train back to Newcastle is conveniently located on Durham Station's northbound platform. **The Waiting Room** utilises the 1872 Ladies Waiting Room, which had been out of use for several years and used only for storage. It is Grade II Listed and the restoration has been in



keeping with this, with lots of original features retained. Two cask beers from local breweries were available, alongside a number of keg selections and cans from another local brewery, so lots of choice. I went with **Farne Island** from Newcastle's **Hadrian Border Brewery**, which is a delicious amber bitter. There's great seating on the platform as well, in an enclosed area to watch trains passing by.

<https://micropubadventures.co.uk>

Camerons Estate Latest

We now have the definitive list of **Camerons** tenanted pubs sold on to FB Taverns. Fifteen are in our branch area, though many did not serve real ale under Camerons and it will be interesting to see what impact there may be on ale. On their website, FB Taverns say *“We will do all that we can to safeguard the future of each property as a pub. However, this is not always possible and in such circumstances we will always explore the most suitable alternative for the community in question.”*

It is also interesting to note that on the Companies House listing, they are described as “Buying and selling of own real estate.” Below is the list, with details of those which sell real ale.

**Queens Head,
Annfield Plain**



Top House, Stanley

Queens Head, Annfield Plain—Camerons Strongarm

Earl Grey, West Kyo

Bellamys, Consett

Bay Horse, Wolsingham—Camerons Strongarm, GNEB Rivet Catcher

Crook Hotel, Crook— one ale, hopefully increasing to two, typically Strongarm, St Austell Tribute, or Morland Old Speckled Hen

Duke of York, Fir Tree—one ale, typically from the Camerons range

Commercial, Willington

Victoria, Spennymoor

Railway, Spennymoor

Manor House, Ferryhill

Railway Crossings, Wingate

Wheatsheaf, Chilton

Eden Arms, West Auckland

Kings Head, Cockfield



**Bay Horse,
Wolsingham**



Duke of York, Fir Tree



Crook Hotel, Crook

THE GOOD THE BAD AND THE UGLY



The Bay Horse by Watson is the full name of the Brandon pub and restaurant which reopened on October 18th - no real ale.

Pub & Kitchen, Cassop has reintroduced real ale.

Planning permission granted to convert the long-term closed **Chelmsford** pub in Ebchester to five bedroomed residential dwelling. This had gone to a committee which had recommended permission refusal. (Planning reference DM/23/00446/FPA)

Duke of Wellington in Consett which had been closed due to running costs has reopened. The branch wasn't aware it had closed, and it didn't serve real ale. However, press reports indicate that it has now been sold privately and will be free of tie. The new licensees were previously involved with the Burton House, Bunopfield.

Latest information on a date for the reopening of a revamped **Red Lion** in Ouston was 18th November.

Refurbished **Castle Eden Inn** duly reopened on October 21st, and two changing cask ales are available.

The Avenue, High Shincliffe started serving food again but has paused again in November

New owner at the **Red Alligator** in South Church near Bishop Auckland, and real ale is available

Bear & Bottle, Coxhoe now refurbished and rebranded as **Lamplight** - Coffee House & Tap Room

Edge Hotel, Woodland reopened - ale situation unknown.

It is thought **Oak Tree**, Tantobie has increased offering to two real ales.

Licensing application has appeared for the '**New King William**' in Shildon.

New licensees of **The Plough** in Hutton Henry have bought the pub, and may consider real ale in the future.

Planning application (DM/23/02191/FPA) submitted to divide closed **Blacksmiths** in Low Pittington into a pub and two flats and so possibly reopen.

Barley Mow, Birtley has reopened, but the real ale situation is not yet known

The Sportsman in Bishop Auckland has new tenants but has still not re-opened.

Square & Compass, West Cornforth, has re-opened after a brief closure and change of ownership and will have two real ales come December

The Gate (formerly the Happy Wanderer) at Framwellgate closed in early November "for a short period" but remained so as we went to press.

The pub chain **Wear Inns** has gone into administration, and new owners are being sought for its 25 venues. Two are in CAMRA Durham's area—the **Ox Hill** at Oxhill near Stanley (Consett) and the **Lambton Arms** in Chester le Street. Only the latter serves real ale, and the word from the pub is that they'll be carrying on as normal. There are usually two ales on offer here, often from Anarchy and Theakston.



Grand Winter Quiz

nee Googling, mind



Answers inside back page

1. What type of ladies' bag is closed with a drawstring?
2. Who is the lead female character in Tomb Raider?
3. Who wrote the book "The Name Of The Rose" ?
4. What is the highest rank in the British Army?
5. What fictional name was used to describe JF Kennedy's tenure as US President?
6. On which island did early immigrants to the USA typically land?
7. How long was Charlie Chaplin's film "The Tramp", in minutes?
8. How many lines are in a Sonnet?
9. Which ancient civilisation worshipped cats?
10. Who designed the Wellington bomber aircraft?
11. What is a Sirocco?
12. Two English kings died in 1066. One was Harold, but who was the other?
13. What is a Lamprey?
14. What main feature of a petrol engine is absent from their diesel equivalent?
15. Who went to Valhalla after their death?

Picture Quiz

can you name these local hostelries?

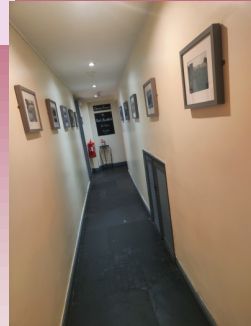
1



2



3



4



5



6



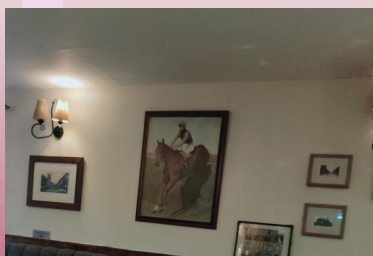
7

Answers inside back page

8



9



10



Discount

Various pubs across the county offer discounts to CAMRA members (make sure you take your membership card). The offers available, as known to us in November 2023 are:

- Green Tree, Bishop Auckland: 10p off pint, 5p off half cask ale on production of valid CAMRA membership card
- Red Lion, North Bitchburn: 20p off pint cask ale for CAMRA members
- Pack Horse, Burnopfield: 10% off real ale for card carrying CAMRA members
- Church Mouse, Chester Moor: 20p off pint of cask ale to card carrying CAMRA members
- Grey Horse, Consett: 10p off a pint on production of valid CAMRA card
- Duke of Wellington, Durham: 20p off a pint of cask ale for CAMRA members.
- Elm Tree, Durham: 10% off real ale on production of valid membership card
- Head of Steam, Durham: 20p off a pint of cask ale for card carrying CAMRA members
- Market Tavern, Durham: 10% off real ale for CAMRA members.
- The Waiting Room, Durham 5% discount on cask ales (not keg) on production of valid CAMRA membership card
- Crow's Nest, Seaham: 10% off cask ale on production of valid CAMRA membership card
- Hare and Hounds, Westgate: First two pints of Weard'Ale beer half price with an evening meal or Sunday carvery. Table must be booked in advance.

In addition, all CAMRA members currently receive £30 of CAMRA vouchers redeemable in the form of 50p off a pint of any cask ale nationally in many pubs. Full details of the scheme can be found on [CAMRA's website](#). In the Durham Branch area these are pubs operated by the Wetherspoon and Stonegate pub companies.

Stonegate pubs in our area are the Library, Durham, The Three Bridges, Durham, the Whitehills, Chester-le-Street, and the Chester Moor.

If you are aware of any offers that aren't listed, or have any problems with the above offers, please let us know. You can find out more about these outlets by viewing their entries in CAMRA's national database whatpub.com.



Perry: A Drinker's Guide

For the first time ever the full international story of perry — the drinks world's best kept secret — is told in CAMRA's ground-breaking book.

The book will help drinkers navigate the styles, flavours, varieties, countries, regions and producers behind this ancient and fascinating drink. Whether long-standing perry fans or those discovering perry for the very first time, the book offers a treasure trove of information. Did you know, for instance, that there are over 130 varieties of “perry pears” in the UK, and that there are over 100 producers of this product, which was first recorded over 2,000 years ago?

Although the biggest industrial brands are on the wane, around the world consumers and producers are waking up to the brilliance, potential, and variety to be found in perry and making better, more exciting full-juice perries than have ever been available before.

Author Adam Wells charts the drink's remarkable history, walks you through the orchards and the trees that make this drink — some of them over three hundred years old — and guides you through perry's three great heartlands, the UK, Normandy, and Austria's Mostviertel, as well as casting an eye on the makers pioneering this drink elsewhere around the world.

Perry has always deserved more of a spotlight, and a perry renaissance is beginning to see it recognised as a distinct and marvellous drink in its own right.

Now CAMRA is giving readers the chance to be part of the journey, with the launch of a Kickstarter campaign, complete with exclusive offers, news, tastings and events. By supporting our Kickstarter campaign and pre-ordering copies, you can play a huge part in bringing this world-first celebration of great international perry to life. Google “Perry: A Drinker's Guide” for details on how to get involved.



ADAM WELLS

Perry: A Drinker's Guide - helping you to find out more about this fantastic drink!

Are you ready to embark on a sensational journey into the world of perry? Look no further! We proudly present the world's first dedicated and comprehensive guide, showcasing the magic of Perry.

Prepare to be captivated by the wonders of this ancient and fascinating drink.

Our book is not only a user-friendly introduction for new enthusiasts but also an invaluable resource for seasoned perry lovers looking to expand their knowledge.

Here's why you need the Ultimate Perry Guide:

1. **Comprehensive and Accessible** - a treasure trove of information, presented in a beautifully illustrated book suitable for all stages of your perry journey. No matter where you are on your path, our guide will be your trusted companion.
2. **Unveiling the Marvels of Perry** - Discover the distinctive qualities that set perry apart from any other drink. We delve into the nuances and stories behind Perry, unveiling its unique history, incredible flavours, and undeniable wonder that makes it truly special.
3. **A Worldwide Voyage** - Explore the heartlands of perry in England's Three Counties, Normandy in France, and Austria's Mostviertel. Experience the rising popularity of Perry in these regions and get a taste of the world-class producers who have championed this extraordinary drink.

What you'll discover:

Journey Through Time: *Uncover the history of perry, from its humble origins to its rise as a cherished drink, paving its way to reclaim its well-deserved prominence.*

· **Pear Varieties Unveiled:** *Gain insight into the flavours brought forth by different pear varieties. Delve into the fascinating differences between Perry pears and culinary pears, enhancing your appreciation for this delightful beverage.*

· **The Making of Perry:** *Explore the intricate process of harvesting, pressing, fermenting, maturation, and packaging. Get a glimpse into the challenges faced by Perry producers and learn about common Perry faults to ensure an exceptional drinking experience.*

· **Styles and Flavours:** *Immerse yourself in the diverse styles of perry, including still, pét-nat, bottle conditioned, and traditional (champagne) methods. Expand your palate and discover your personal favourite.*

· **The Art of Perry Enjoyment:** *Get expert insights on tasting techniques, the perfect serving temperatures, and the ideal glassware to elevate your perry enjoyment to new heights.*

· **Global Revelations:** *Embark on a journey around the world as we explore perry in various countries and regions. Uncover the history, discover renowned producers, and indulge in tasting notes that will transport you to each unique location.*

· **Perry Pairings:** *Elevate your culinary adventures with perry by uncovering suggested food matches for different Perry styles.*

· **Shaping the perry Future:** *Conclude your journey with an overview of the modern state of perry and the exciting possibilities that lie ahead. Ponder the potential this exceptional drink holds for the years to come.*

Beer Scoring... Why It Matters

Back in 2020 the Branch ran a survey, part of which asked if people score their beers in CAMRA's WhatPub website. Out of 133 responses, only 26 score their beers on WhatPub. Reading the comments on why people don't score their beers, the answers seem to fall into three general categories: those who didn't know they could, those who just want to drink the beer and socialise, and those who don't think they know enough about beer to comment.

For the first group, hopefully this article means you're now aware! For the 2nd group, we understand that. But at the same time, to score a beer takes a matter of seconds and can be part of your socialising as you talk to those you're with about the beer. But it's also important to think about why we want you to score beers. Given the size of the Branch area, it is impossible for us to visit every pub regularly. This means that beer scores and your comments are our best way of finding out what is happening. There may be a pub that has stopped selling real ale, or hopefully one that has started. There may also be cases where beer quality is falling and we may wish to help a pub improve. But most importantly beer scores are a big factor in determining which pubs make it into the Good Beer Guide.



In an ideal world, for a pub to be considered it needs an average score of 3 or more across at least 3 different scorers. The GBG list is also what we use for shortlisting the Branch Pub of the Year award. Unfortunately, you may be sitting in the country's best pub, but if we don't know how good it is, it is in danger of being overlooked. For the last group, we want to keep beer scoring as simple as possible. While CAMRA does compile detailed notes and scores on beers, these are done by trained Tasting Panels (of which more in the next issue) and concen-

trates on the beer rather than the pub. For everyday scoring, the system is a lot simpler than you might think. All we want is a score from 0 to 5 (half points are allowed).

0. No cask ale available.
1. Poor. Beer that is anything from barely drinkable to drinkable with considerable resentment.
2. Average. Competently kept, drinkable pint but doesn't inspire in any way, not worth moving to another pub
3. Good. Good beer in good form. You may cancel plans to move to the next pub.
4. Very Good. Excellent beer in excellent condition.
5. Perfect. Probably the best you are ever likely to find. A seasoned drinker will award this score very rarely.

data.beerscoring.org.uk

It really is as simple as that! So why don't you give it a try now? All you need to do is visit [https:// whatpub.com/](https://whatpub.com/) and search for the pub you're in. On mobile, there is an icon at the top right to search for pubs based on your location. Then tap Submit Beer Scores and fill in the details (you will be prompted to log in with your National Website username, which is your membership number, and password—visit <https://account.camra.org.uk/forgot-password> to reset if needed). In the advanced options it would also help us if you can tell us how much the beer was and any other comments. You can also use WhatPub to let us know of any changes to a pub. There may be facilities that have been added or removed, or changes in opening hours.

Again, we can't check every pub all the time so any help you can give us while visiting a pub is greatly appreciated. If you do need any more help please get in touch with us either on our Facebook Group which can be found at <https://www.facebook.com/groups/camradurham/> or you can email our Pubs Officer at pubsofficer@camradurham.org.uk who will also happily receive any other feedback you may have on pubs. Thanks in advance.

Neil Shaw

YE OLD ELM TREE

**Winner CAMRA
City Pub of the
Year 2023**



**Traditional Pub
and one of Durham's
oldest inns.**

**Friendly and inviting,
we welcome locals and
visitors to the city
alike.**

**10% CAMRA
Real Ale Discount**



- . Home cooked food served daily
- . Resident folk music every Monday and Tuesday evening
- . Quiz night every Wednesday
- . 5 real ales and 1 guest cider always available
- . Fully covered beer garden



THE STATION HOUSE,
NORTH ROAD, DURHAM,
DH1 4SE

OPENING TIMES:

- FRI: 2PM - 11PM • SAT: 12PM - 11PM,
- SUN: 4PM - 10.30PM • TUES - THURS: 4PM - 10.30PM,



CASK
BEER

REAL
CIDER

CRAFT
KEG

WINES
& SPIRITS



29B FRONT STREET,
FRAMWELLGATE MOOR,
DH1 5EE

OPENING TIMES:

- FRI: 2PM - 10.30PM • SAT: 12PM - 10.30PM,
- SUN: 2PM - 9PM • TUES - THURS: 4PM - 10.30PM,

The Answers Bit

Grand Spring Quiz 1. A Dorothy bag 2. Lara Croft 3. Umberto Eco 4. Field Marshall 5. Camelot 6. Ellis Island 7. 26 minutes 8. 14 9. Egyptian 10. Sir Barnes Wallis 11. A hot wind that originates in the Sahara...or a Volkswagen car 12. Edward the Confessor 13. Fish 14. Ignition system 15. Viking warriors

Picture Quiz 1 Cedesfield Hall, Sedgefield 2 Durham Brewery Taproom, Bowburn 3 Cross Keys, Eastgate 4 Dun Cow, Sedgefield 5 6 Red Alligator South Church 7 Pollards, Bishop Auckland 8 Hardwick Arms, Sedgefield 9 Red Alligator again (Gotcha! Sorry) 10 Winning Post, Merrington Lane, Spennymoor

THE
AWARD WINNING
**MAXIM
BREWERY**

DOUBLE MAXIM
PREMIUM BROWN ALE

MAXIM BREWERY
SINCE 1901
**DOUBLE
MAXIM**
PREMIUM
Quality Ale
JUSTLY FAMED

MAXIM BREWERY
**SWEDISH
BLONDE**
Almost Fruity Hoppy Ale

MAXIM BREWERY
MAXIMUS
STOUT SOFT UN ALE

BBI
2016

Gold

SIBA
SMALL PACK BEER
COMPETITION
2016
Gold

SIBA
SMALL PACK BEER
COMPETITION
2016
Gold

The home of Double Maxim



The Victoria Inn



Five cask ales
En-suite B&B



- Durham's only CAMRA National Inventory listed pub
- Whiskey and Whisky galore!
- Grade 2 listed by English Heritage
- A dozen local and regional CAMRA awards
- Atmospheric and friendly bar
- Private car park
- Dog friendly



Hallgarth Street, Durham DH1 3AS

01913865269

mwebstervictoria@gmail.com