



CAMPAIGN
FOR
REAL ALE

Issue 144

Autumn 2023

*Free! Please
take one*

Durham Drinker

Inside:

- *Grey Horse, Consett, makes last sixteen in national Pub of the Year competition. Who are they up against?*
- *Lots of local pub news*
- *41st Durham Beer Festival in pictures*
- *Usual quizzes*



- *Dates for your diary*
- *More Micropub Adventures*
- *Station House is Regional Cider Pub of the Year*
- *Darlington Ale Trail launched*



The Half Moon, Durham

Award winning traditional British pub in the heart of Durham city, with listed features including the back bar and fireplace, fitted in 1905.

A large riverside courtyard partially covered with a retractable roof down by the river Wear.

Cask Marque approved real ales, including Bass & Landlord, a member of the Timothy Taylors champion club, and included in the GBG for many years

Full sports package with 4 TVs inside and 6 outside.

Dog friendly inside & out



New Elvet, Durham, DH1 3AQ

0191 3741918



Please like our Facebook page and follow us on Instagram for latest news and info.



Diary Dates:

- Until October 29th—**Darlington Ale Trail**. See p 26
- **Surtees Arms**, Ferryhill Station: beer festival September 20th—24th
- CAMRA Durham Wednesday Wander, September 27th meet at **Dun Cow**, Sedgefield at 1pm
- **Snods Edge** Beer Festival October 6th & 7th
- Wetherspoon Autumn Beer Festival October 11th—22nd. Meet at the **Grand Electric Hall**, Spennymoor for the launch at 7pm on 11th
- **Coxhoe Village Hall** Oktoberfest, October 14th
- **Station House**, Durham: “Head to Head” Beer Festival October 18th-22nd
- October 20th - 22nd—**Christ Church Consett** “**Fix the Clock**” beer festival, at the church hall, including our **monthly social** on 21st.
- October 25th Wednesday Wander, details to be confirmed
- November 29th Wednesday Wander, details to be confirmed
- CAMRA Durham Christmas do, **Station House**, Durham Monday December 18th from 6pm

Hello and welcome to issue 142 of Durham Drinker.

We've had a busy summer putting together and running the 41st Durham Beer Festival, which once again was a great success thanks to the efforts of our intrepid band of volunteers from CAMRA Durham and neighbouring branches, and the good old British public. Thanks go to all those kind folks, to those who sponsored beers and ciders, and also to the Mayor of Durham, Lesley Mavin, who kindly performed the opening ceremony and thought Elvet Cider Company's Durham Blend to be very nice.

The festival wouldn't have gone ahead without the assistance of our friends at the venue, Durham City Rugby Club, and we hope to be back there next year.

In other news, further cuts to bus routes mean even less chance of getting to more rural pubs, while reliability of those that remain is still a concern and a major threat to the hospitality sector. However, if you can get the bus to the pub, please do so and support the industry

Cheers, Paul Dobson

Welcome to Ye Old Elm Tree

Traditional pub dating back to the 1600s, with a fantastic range of five rotating real ales and real cider.

Folk nights every Monday and Tuesday, and Durham's most testing quiz on Wednesdays

Durham's self-proclaimed Best Beer Garden.

Dog friendly

10% discount on real ale for CAMRA members



CAMRA Durham committee

Chairman & Public Affairs Officer: Paul Dobson

Treasurer: Sean Quilty

Secretary : Tony Dent

Membership secretary: Andy Stowell

Durham Drinker, publications, & campaigns: Paul Dobson

Apple Rep (cider) Chris Mansfield

Pubs officer: Dave Thornton

Website & Social Media: Neil Shaw

Social Secretary: Neil Cleall

Pubs Preservation: Peter Jones

Pub Promotions and Awards Coordinator: vacant

Pub Protection Officer: Peter Lawson

GBG submissions: Peter Jones

Environment Officer: Garry Halliday

Brewery Liaison Officers

Durham: Neil Shaw

Consett Ale Works: Sandra Wilkinson

Hill Island: Chris Mansfield

Yard of Ale: Arthur Corner

Weard'Ale, George Samuel, North Pier, McColl's: Paul Dobson

Castle Eden: Arthur Corner

Hopper House Farm: Peter Jones

Caps Off: Paul Dobson



***Take advantage of
Durham Drinker's competitive advertising rates.***

***Quarter page £45, half page
£65, or full page £120.***

***Discount for taking out one
year's worth (4 issues)***

***3,000 copies distributed across
County Durham's pubs and
clubs, and anywhere else our
members are visiting. Design
service available***

Contact us at:

publications@camradurham.org.uk

pubsofficer@camradurham.org.uk

Find us at:

www.camradurham.org.uk

Also Facebook and Twitter (x)

The Victoria Inn



**Five cask ales
En-suite B&B**



- Durham's only CAMRA National Inventory listed pub
- Whiskey and Whisky galore!
- Grade 2 listed by English Heritage
- A dozen local and regional CAMRA awards
- Atmospheric and friendly bar
- Private car park
- Dog friendly



Hallgarth Street, Durham DH1 3AS

01913865269

mwebstervictoria@gmail.com



21 North Burns
Chester Le Street
Durham
DH33TF



www.craftybrew.co.uk



BII



THE STAPYLTON ARMS HAWTHORN VILLAGE – SR7 8SD



Comedy Nights, every
month – check our
Facebook page for
details.

Quiz Night – Thursday

Full menu served
Wed-Sat

Fantastic Sunday
Lunches



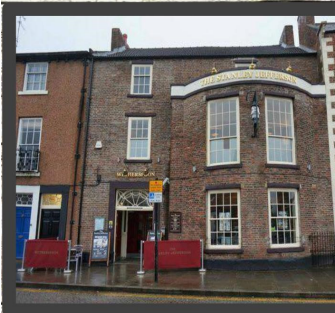
Durham CAMRA Country Pub
of the Year Runner-up, 2022
0191 527 0778



WETHERSPOON



Wed 11th October – Sun 22nd October



The Stanley Jefferson

**5 Market Place,
Bishop Auckland,
DL14 7NJ**

01388 452830



The Horse Shoe Inn

**4 Church Street,
Crook, DL15 9BG**

01388 744980



The Grand Electric Hall

**2 Cheapside,
Spennymoor. DL16 6DJ**

01388 825470



THE STATION HOUSE,
NORTH ROAD, DURHAM,
DH1 4SE

OPENING TIMES:

- FRI. 2PM - 11PM • SAT. 12PM - 11PM,
- SUN. 4PM - 10.30PM • TUES - THURS. 4PM - 10.30PM,



CASK
BEER

REAL
CIDER

CRAFT
KEG

WINES
& SPIRITS



29B FRONT STREET,
FRAMWELLGATE MOOR,
DH1 5EE

OPENING TIMES:

- FRI. 2PM - 10.30PM • SAT. 12PM - 10.30PM,
- SUN. 2PM - 9PM • TUES - THURS. 4PM - 10.30PM,

The Victoria Inn, Witton le Wear

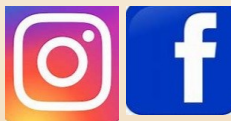
- Three cask ales, two rotating to include local and national ales
- Dogs welcome
- South facing beer garden
- B&B available
- Over fifty gins and whiskies
- Open 6 nights (not Monday)
- DL14 0AS



THE SMOKEHOUSE, BISHOP AUCKLAND

American-inspired smokehouse serving:

- Low & slow cooked smoked meats
- Sharing platters
- Flame-grilled burgers
- Loaded chips
- Local cider and real ale



Open Wednesday-Saturday until we sell out - check out our socials for opening hours. "smokehouse railway street"

1 Railway Street, Bishop Auckland 01388 351131

New pop-up bar and event space "The Smokey" in adjacent Chester Street. Open for monthly socials and special events



Station House scoops regional cider award

Durham's Station House, on North Road, has another certificate to add to its already impressive collection. CAMRA members from across the North East region have voted it the Regional Cider Pub of the Year. With the increasing use of concentrate rather than pure apple juice (or pear juice if we're talking about perry) the availability of real cider has become much reduced. However, the Station House have stuck to their guns and only provide cider and perry that is made with pure juice - and they also offer their very own cider from the Elvet Cider Company. Their cider is produced using apples that are collected locally, many of which are windfall donated by the residents of the North East, and last year over three tonnes of donated fruit was pressed.



If you've any falling in your garden that you don't have a use for, you can drop them off at Breaking Bread café in Bishop Auckland Market Place, True North Emporium on Spennymoor's Cheapside, or Weight to Shop on Framwellgate Moor Front Street (or the nearby Fram Ferment).



North East Region Cider Coordinator Bill Wilkinson presents the Cider Pub of the Year to Susie Mansfield of the Station House (photo K.Paul)

CITY HOTEL, Durham

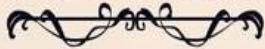
84 New Elvet,

DH1 3AQ

07393 992 493



**THE CITY
BAR & HOTEL**



sky SPORTS

BT Sport

sports TV & cocktails



10 Value for money in a very comfortable, clean & cosy room. The owners & staff really care about you

Wed, Mar 2, 2022 2:16 PM

Cleanliness	10	Comfort	10
Location	10	Facilities	10
Staff	10	Value for money	10



10 great reasons to join CAMRA

1 CAMPAIGN
for great beer, cider and perry

2 Become a
BEER EXPERT

3 Enjoy CAMRA
BEER FESTIVALS
in front of or behind the bar

4 GET INVOLVED
and make new friends

5 Save
YOUR LOCAL

6 Find the
**BEST PUBS
IN BRITAIN**

Get great
**7 VALUE FOR
MONEY**

8 DISCOVER
pub heritage and the
great outdoors

9 Enjoy great
HEALTH BENEFITS
(really!)

10 HAVE YOUR SAY

What's yours?

Discover your reason
and join the campaign today:
www.camra.org.uk/10reasons



Campaign
for
Real Ale

Vote for the Champion Beer of Britain !

The first stage of voting for the CAMRA's next Champion Beer of Britain has officially opened, and CAMRA members are invited to have their say on which beers are the 'cream of the crop'. This initial stage of the competition is exclusive to CAMRA members, who can choose up to five beers across each of the new categories. This will take place alongside a series of rigorous regional heats throughout 2024, culminating in the final judging and announcement at the Trade Day of Great British Beer Festival 2024. All the heats and the final round of judging adhere to a strict blind tasting policy, so none of the judges know which beer they are tasting. The Champion Beer of Britain is one of the most prestigious beer competitions in the world. It is the ultimate honour for UK brewers and has helped put many into the national spotlight and is awarded every year at the Trade Session of the Great British Beer Festival. Judging for the competition takes around a year, starting with individual nominations from CAMRA members and local and regional competitions. On the first day of the festival, a team of judges mull over the contenders for the competition

Vote by logging on here: <https://cbob.camra.org.uk/>



We're currently looking for nominations for beers to enter this year's competition. Voting for the next round of the competition is open from 8 September 2023, and runs until **1 November 2023**.

You can now vote using our new user-friendly online system, which allows you to cast your votes for a much wider choice of beers than ever before – from local brews to favourites from all over the country.

Voting is really simple and the new website includes a useful tutorial video to take you through the process. You can also consider getting involved in other stages of the competition, by volunteering to take part in Tasting Panels

LAST SIXTEEN !

CAMRA's top 16 pubs in the country have been announced following a year of rigorous judging in its National Pub of the Year competition.

Covering the entire UK, the regional finalists battled it out with thousands of pubs across the country to be crowned the winner in their area – and for the North East, that was the **Grey Horse** in **Consett**. Last year **Durham's Station House** was runner-up, so here's hoping for one better this time!

The cream of the crop will now go forward to the grand final for the National Pub of the Year 2023 crown – the highest accolade afforded to British pubs. The final four will be announced in October, and the overall winner will be announced early 2024.

Pubs in the competition are scored on their atmosphere, decor, welcome, service, inclusivity, overall impression, but most importantly the quality of live beer, real cider, and perry. Last year's winner was the **Tamworth Tap**, Staffordshire which has once again reached the final 16.

In the wake of the demolition of the **Crooked House**, CAMRA recently declared the issue of unlawful conversion and demolition of pubs in England a 'nationwide scandal'. In 2017 planning law was changed so that pubs in England could not be converted or demolished without planning permission, but shocking figures published by CAMRA in August show that over 30 pubs may have been demolished or converted without planning permission in the last six months. The recognition and celebration of top-quality pubs has never been more important in the fight to ensure that locals across the country are thriving and kept safe from demolitions such as these.

Andrea Briers, National Coordinator for the Pub of the Year competition says: "I am delighted to announce this year's final 16 pubs. I would like to congratulate each and every one of them for their hard work against a difficult backdrop for the trade with increasing energy costs, business rates and the cost-of-living crisis impacting on people visiting pubs.

"It is testament to the winners that they are facing these challenges head on and they are a shining example to what can be done. I would also like to thank their loyal customers who continue to support them in these difficult times.

"There are thousands of amazing pubs across the country and I would encourage everyone to visit their local and seek out others where they live. Not only will that support local businesses, but pubs play a vital part in communities which we want to protect, promote, and see thrive."

The regional winners are *(in no particular order other than alphabetically by region):*

Central Southern Butchers Arms, Balscote, Oxfordshire Hook Norton beers and a monthly guest are served straight from the cask behind the bar in this cosy parlour pub. Owned by the brewery since 1878, the building was once an abattoir and still has an icehouse in the garden. A

roaring fire in winter and a lovely beer garden make this an all-year destination. Open all day at weekends and from late afternoon Monday-Friday.

East Anglia Endeavour, Chelmsford Cosy and friendly community pub, not far



from the city centre in the popular Springfield Road area. Three rooms offer a welcoming atmosphere in which to enjoy a selection of regularly changing casks ales. The pub hosts mini beer festivals, tap takeovers, and regular charity events. There is a suntrap garden and the pub is dog friendly.



East Midlands Horse & Jockey, Stapleford Known locally as 'The Jockey,' this welcoming free house offers a choice of 13 real ales, including at least one mild or stout/porter, five of which are LocAle. A split-level pub with the main bar area featuring sofas and high tables and warmed by a wood burner, the upper seated area has tables and perimeter seating, a fish tank and sports TV. The pub is dog friendly, with water and doggy treats being provided.



Greater London Hope, Carshalton Owned by its customers and totally free of tie, this community pub is 'by beer enthusiasts for beer enthusiasts'. Two regular ales and five rapidly changing guest ales are supplemented by craft keg beers. There is a piano in the conservatory room but no fruit machines, TV, or music. The pub has several times been in CAMRA's Greater London Pub of the Year top two.



Greater Manchester Fox & Pine, Oldham A new and very valuable

addition to the previously sparse Real Ale scene in Oldham Town Centre, the Fox and Pine is a real ale lovers' delight, with 10 hand pumps serving varied beer styles (always at least one dark beer) plus 6 Real Ciders. The pub also features 5 ABK fonts for those who like traditional Bavarian Beer. The bar is downstairs with an open seating area, whilst upstairs are two linked rooms. It is all decorated with a Fox and Pine theme - the name refers to the origins of the owners from Leicester and Oldham.



Kent Nelson Arms, Tonbridge Situated in a quiet residential area within easy walking distance of the railway station and High Street. A range of six to eight beers across a range of styles representing national and local independent breweries is usually served. Up to 15 real ciders are also available along with craft keg beers.

Merseyside – Cheshire Turks Head, St Helens Attractive Tudor-style 1870s pub near the town centre. Real ales and real ciders are on 14 hand pulls, and there is a large whisky and gin selection. The upstairs Tower Lounge serves cocktails plus craft and continental beers and hosts live music on Saturday evening. There is a large beer garden to the side and rear with an outside bar and wood-fired pizza oven.



North East Grey Horse, Consett Traditional pub dating back to 1848, the oldest in Consett. The interior comprises a lounge and L-shaped bar, with a wood-beamed ceiling. Open log fires are welcoming in winter, and Consett Ale Works Brewery is at the rear. Beer festivals are held twice a year, a quiz each Wednesday and open mic on Sunday. The Coast-to-Coast cycle route is close by, and the pub holds many CAMRA awards.



Scotland & Northern Ireland Hillend Tavern, Dalgety Bay, Fife A community-focused village pub near Dalgety Bay, with cosy coal fires, a beer garden and real ales all adding to the friendly and welcoming atmosphere. The Tav, as it is known, has a traditional bar and a spacious area at the rear that is ideal for larger groups or functions and also hosts many village events

South West Halfway House, Pitney, Somerset An outstanding hostelry serving eight to 10 regional ales on gravity alongside many bottled beers, and four real ciders. The inside is traditional with flagstone flooring, old solid wooden tables and benches, and three real fires. This rustic but busy pub deserves its many accolades and has been in the Good Beer Guide for many years, gaining the ultimate award of CAMRA National Pub of the Year in 1996.



Surrey & Sussex Watchmaker's Arms, Hove This micropub has a small outside seating area on the pavement with two tables, which are well-used. The pub generally has four cask beers on sale, served from a cold room behind the bar, rotating fortnightly and almost always from small breweries, with many from Sussex, Hampshire, and Kent. Real cider is also always available, mainly sourced from local producers.

Wales Magic Dragon Brewery Tap, Wrexham Single-roomed pub that is the tap for the Magic Dragon Brewery, based just outside Wrexham. The pub is on the edge of what was known as the Beast Market, in a building that was originally the Elephant & Castle and after several changes of use is now pleasingly back as a pub. Its compact interior features bare brick walls and a wood-panelled bar. Six handpumps dispense at least three Magic Dragon beers, including a dark ale.



Wessex Barking Cat Alehouse, Poole Popular and vibrant two-roomed alehouse serving an interesting choice of beers, mainly from small breweries around the UK. There are eight real ales and six traditional ciders or perries on handpump alongside 10 craft keg beers.

West Midlands Tamworth Tap, Tamworth An elegant building, home to Tamworth Brewing Company and its tap. The cosy upstairs rooms have Tudor features, the historic courtyard beer terrace to the rear offers striking views of Tamworth Castle, and there is café-style seating to the front. Eight hand pulls usually feature one Tamworth ale, the rest from near and far. Various snacks are offered, plus a wide range of ciders, gins, wines, and bottled beers. There is a 'CAMRA corner' at the bottom of the stairs which includes a rare complete set of Good Beer Guides. The courtyard features regular live music with local performers, bat watch evenings, and the occasional screening of cult films on a large screen.



West Pennines Trafalgar Hotel, Ramsey, Isle of Man A long-standing real ale pub on the harbour, now owned by Odin brewery and usually serving four of their beers plus two guests. There are unobtrusive TVs showing sport, and outside is a small area of wooden bench seating that overlooks the harbour.

Yorkshire Beer Engine, Skipton A well-established micropub in a tiny street between the town centre and the canal, with a friendly and welcoming ambience. Six handpumps dispense varying beers, always including one blonde or pale ale and one dark brew, plus a "character" beer. Extended in 2022, the bar now includes craft keg fonts. A still cider and a fruit cider are also on tap alongside a selection of bottled and canned beers, and wines.



The 2024 Good Beer Guide is launched on September 28th, with 4500 pubs, bars, and clubs selected by unpaid volunteers up and down the country, this is the best guide for pub-goers interested in being served a good pint of real ale as well as those who wish to find a local near them that is welcoming and has many other benefits that may appeal.

Each entry contains a short description as well as details of regular beers that can be linked to the brewery section to discover local beers, as well as some treasured national favourites.

This guide is compiled by consumers for consumers and is the most independent and complete guide to finding good beer. This edition's foreword is by Bruce Dickinson, the frontman and lead singer of one of the most successful bands to come from the UK, Iron Maiden. He is also a collaborative brewer with Robinsons, producing one of the UK's most successful real ale beer brands that started with *Trooper* a decade ago.

His foreword is a personal reflection on his love of beer, pubs, and a job that he describes as 'the best on the planet' – which includes brewing and drinking beer! *'You hold in your hands a voyage of discovery not just through a wonderful world of traditional ales and brewers, but also a lens through which to observe the web of history which weaves around the fabric of that almost unique institution-the British Pub.'*



CAMRA Durham may have some copies available at a discounted price for local members, so if you'd like one please get in touch. Otherwise, visit the CAMRA online bookshop—or physically visit a bookshop on the high street.

Micropub adventures chapter two.

After issue 143's jaunt around Tyneside, our intrepid micropub blogger went a couple of stations down the east coast main line to Northallerton. Actual micropubs were in short supply, but there were plenty of larger premises to visit...

The first pub I came to was **The Tickle Toby Inn**, allegedly named after a local highwayman and not an invitation to get close to the barman. There are three hand pulls here but only one was being used, which served Black Sheep Best Bitter. Always a good beer in my opinion. The pub had a clean layout and is very comfortable inside.

The Standard Right at the very end of the main street is The Standard, which is named after The Battle of the Standard which took place three miles north of Northallerton at Cowton Moor, on August 22nd 1138. The beer garden here used to be home to a Jet Provost Aircraft but it has recently been relocated to a local museum. Three ales were available here: Wainwright, Bradfield Farmer's Blonde, and UBU Purity. It's a great traditional pub inside and the food being cooked smelled delicious.



Oddfellows Arms A very traditional pub with the locals making me welcome as soon as I walked in. There's a lovely layout which was very welcoming and comfy. Three cask ales on here – two from Ossett Brewery (White Rat and Blonde) and one from Pennine Brewery (Good Try). I hadn't seen the Pennine beer before so decided on that. Lovely Amber beer. Also on the bar on keg was Bayonet Brewery's One Pip Wonder (4.5% Hazy IPA). Bayonet Brewery is Northallerton based and was set up in October 2021. Their beer is described as "A soft, juicy session brew with an inviting haze that is bursting with notes of citrus, passion fruit and berry".

Zetland Winestore Upon researching Bayonet Brewery before heading up here, I found that Zetland Winestore stocked their beers. After ordering a couple in advance, I dropped into pick them up. The shop has a great range of beers in cans and bottles from local breweries, and other bigger breweries. It's a really good place to drop into to pick up a few beers to take home with you!



Situated on a corner is the **Masons Arms**., which is listed as a Heritage Pub – “Interior of Some Regional Importance”. The bar servery as you walk in is very impressive and original. Lots of other features still remain including front smoke room and entrance vestibule. One beer was on offer here, which was Timothy Taylor Landlord and was very well kept.

Origins. Replacing an older bar (after a refurb) is this very up market establishment with modern décor, serving three cask ales and a range of keg beers. I decided on Rudgate White Dragon, which is a nice pale ale with a hint of lemongrass

Stumble Inn Micropub. Located down a side alley, The Stumble Inn Micropub is a great little bar, which was really busy. Three pale ales from Copper Dragon, Elland, and Durham Breweries were available, along with Sticky Toffee Porter from Three Brothers Brewing. There was a great range of ciders and several craft keg lines on as well. Even though it's local to me, the Elland beer was one I'd not seen before so went with a pint of their Globe Trotter. Beware the chilli pork scratchings!



The Little Tanner Down a small alleyway, this hidden pub consists of one room downstairs and one upstairs. Three hand pulls on the bar, but only two being used on this visit, both with Copper Dragon beers. IPA and 1816. There's an interesting wall of bottles as you walk in as well, with many from micro- breweries.

The Golden Lion An old coaching house in the centre of town which is now listed, it's a very traditional pub and restaurant. There's a covered well inside the main bar and three cask ales, from Tetley's, Wainwright, and Camerons.

Where to next? Check out the options at micropubadventures.co.uk



THE GOOD THE BAD AND THE UGLY



Camerons have sold 27 tenanted pubs to FB Taverns of London. The press release mentions that included in these are **Top House**, Stanley and **Kings Head**, Bishop Auckland. The **Manor House**, Ferryhill and the **Wheatsheaf**, Chilton are in our area and are also rumoured to be amongst them. So far we have been unable to get a definitive list - the position of Camerons BLO in the Cleveland branch is vacant.

There has been a change of management at **Travellers Rest**, Witton Gilbert with 'team from **Red Lion**' (assumed to be nearby Plawsworth) taking over the reins.

Confirmation has been received there is no real ale in the reopened **Old England** in Great Lumley

The **Library** in Durham (Stonegate) will give discount both on production of CAMRA card (10%) or 50p with voucher whichever suits. But not both at same time!! The **Three Bridges**, also Stonegate, will accept the discount vouchers.

The **Head of Steam**, Durham have put in a planning application to improve their outside area by demolishing a derelict building and build a wooden pergola for outdoor seating - and it's been approved.

The **Dog & Gun** in Bearpark no longer has any signage, but we've no idea when it closed or was last open - probably a long time ago.

There has been a change of tenant at the **Garden House**, Durham resulting in a temporary closure for refurbishment. It reopened on August 25th as The **Cartologist** with a desire to offer local ale. Two handpumps offering Durham and Anarchy beers were operating on opening day.

The **Pub & Kitchen** (formerly the Bay Horse) in Brandon closed suddenly.

Tenants of the **Brawn's Den** in Brandon have taken on the recently closed **Station** in Langley Moor - it reopened at the end of August

We've been informed that the **Pub & Kitchen** in Cassop will be putting real ale back on 'in a few weeks' when new pumps have been installed.

Durham City Parish Council and City of Durham Trust have submitted objections to the planning submission by the **Big Jug** because of potential noise and

external repair work which may affect the appearance.

Hidden on the Harbour opened in Seaham August 4th, but is unlikely to have cask - its Sunderland outlet doesn't. We've not checked yet, so if you're passing please have a look and let us know what you find!

The **Frosterley Inn**, Frosterley is no longer serving real ale

The **Undercroft** bar in University College (the Castle) no longer serves real ale and handpumps have been removed. The Whatpub entry has been corrected but our information on college bars is well out of date. Are there any academics out there who can keep us up to date?

The **Sportsman** (formerly the Merry Monk and before that the Sportsman), Bishop Auckland closed on August 27th. While it's had no real ale for a while, it was very sad to see one of the County's oldest pubs close its doors—however, it's just been announced that “the owners of the Sportsman are delighted to announce that after a round of viewings and interviews they have...agreed a long-term lease with a new leisure company to take the Sportsman forward.” The pub will undergo a refurbishment and re-open in the not too distant future. Let's see if any real ale becomes available.

The previously reported planning application DM/23/01429/FPA submitted to convert a former betting shop in **Peterlee** to a drinking establishment featuring amongst other things craft and cask local beer has been sent to the planning committee rather than allowing a delegated decision on 12th September as the local councils objected. I (CAMRA Durham pubs officer) put in a personal letter of support but not as the branch as no interest was received from any local members. The planners themselves have recommended approval to the committee.

Crafty Brew micropub and bottle shop opened in Chester-le-Street in August. Cans and bottles only initially.

The Castle Eden Inn has closed for a refit and will be back in business in mid-October.

We've probably missed some changes, so if you know of any, please let us know



Grand Spring Quiz

nee Googling, mind



Answers inside back page

1. Of which country was Hastings Banda president in the 1970s?
2. Which is the first major Flat Race of the horse racing calendar?
3. What was the old-fashioned remedy of milk and onions supposed to cure?
4. Which two countries are separated by the 49th parallel?
5. Which is England's oldest university?
6. What plant is often called The Butterfly Bush?
7. In what year was the first Top of the Pops broadcast?
8. Which animal can't stick out its tongue?
9. In which country is the world's oldest parliament?
10. By which Norwegian name is a traitor in war known?



Cllr Lesley Mavin, the Mayor of Durham, raises a glass at the opening of the 41st Durham Beer Festival at Durham City Rugby Club



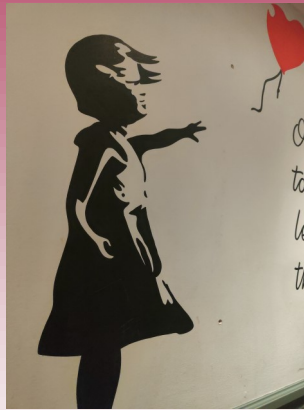
Picture Quiz

can you name these local hostelries?

1



2



3



4



5



6



7



8



9



10



Answers inside back page

Discount

Various pubs across the county offer discounts to CAMRA members (make sure you take your membership card). The offers available, as known to us in November 2022, are:

- Green Tree, Bishop Auckland: 10p off pint, 5p off half cask ale on production of valid CAMRA membership card
- Bay Horse, Bishop Auckland 10% off real ale on production of a current CAMRA membership card
- Red Lion, North Bitchburn: 20p off pint cask ale for CAMRA members
- Pack Horse, Burnopfield: 10% off real ale for card carrying CAMRA members
- Church Mouse, Chester Moor: 20p off pint of cask ale to card carrying CAMRA members
- Grey Horse, Consett: 10p off a pint on production of valid CAMRA card
- Duke of Wellington, Durham: 20p off a pint of cask ale for CAMRA members.
- Elm Tree, Durham: 10% off real ale on production of valid membership card
- Head of Steam, Durham: 20p off a pint of cask ale for card carrying CAMRA members
- Market Tavern, Durham: 10% off real ale for CAMRA members.
- The Waiting Room, Durham 5% discount on cask ales (not keg) on production of valid CAMRA membership card
- Crow's Nest, Seaham: 10% off cask ale on production of valid CAMRA membership card
- Hare and Hounds, Westgate: First two pints of Weard'Ale beer half price with an evening meal or Sunday carvery. Table must be booked in advance.

In addition, all CAMRA members currently receive £30 of CAMRA vouchers redeemable in the form of 50p off a pint of any cask ale nationally in many pubs. Full details of the scheme can be found on [CAMRA's website](https://www.camra.org.uk). In the Durham Branch area these are pubs operated by the Wetherspoon, Stonegate, and Amber Taverns pub companies.

Stonegate pubs in our area are the Library, Durham, The Three Bridges, Durham, the Whitehills, Chester-le-Street, and the Chester Moor. Amber Taverns have the Water House, Durham, and the Three Stories, Peterlee



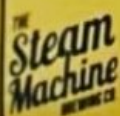
If you are aware of any offers that aren't listed, or have any problems with the above offers, please let us know. You can find out more about these outlets by viewing their entries in CAMRA's national database whatpub.com.



REAL ALE 2023 TRAIL

DARLINGTON - NEWTON Aycliffe - BARNARD CASTLE
SAT 16TH SEPTEMBER - SUN 29TH OCTOBER

Lots of Beer Prizes to be won provided by ...



**DIONYSIAC
BREWING**



For more info on who's involved and
where to collect your booklet,
scan here or visit: darlo.camra.org.uk

INFO/FAQS



SOCIAL MEDIA



#Love
Darlo

Time for a Trip?

Our neighbours in the CAMRA Darlington branch have launched their Darlington Ale Trail, which covers not just Darlington but Barnard Castle, Manfield, and Newton Aycliffe.

The aim of the game is quite straightforward: There are fourteen pubs included, and all you have to do is buy a map for £1 from one of the four Ale Trail HQs, (the House of Hop and the Snooker Club in Darlington, the Steam Machine Brewery in Newton Aycliffe, and the Old Well in Barnard Castle) visit the pubs and have a pint or half pint of real ale or cider, and get a sticker on your card. Once you've completed your card, hand it back at an Ale Trail HQ for the chance to win beery prizes. If you can't manage to visit all 14 pubs, there will be a second prize draw for anyone completing ten or more.

The fun began on September 16th and runs until October 29th. It's open to all, not just CAMRA members—but several of the pubs on the trail offer CAMRA discount, so get joined up sharpish to take advantage! Also, if Craft Beer is your thing, we've included it in this competition.

For completed booklets there will be three sets of prize draws:

Prize 1 - Steam Machine mixed beer pack, Three Brothers Variety beer pack, Second Sun First batch beer (bottles)

Prize 2 - McColl's 12 bottle variety beer pack, Second Sun First Batch beer (bottles)

Prize 3 - Black Sheep Brewery Tour tickets x 4, Crate of Black Sheep beer, Second Sun First batch beer (bottles)

For part-complete maps (10 stickers) there will be a single prize draw for:

Mithril Ales cap & branded glasses set, Dionysiac 6 bottle variety beer pack, Second Sun First batch beer (bottles)

Fastest Finisher

The fastest person to hand in a completed map will win a special prize:

3 brothers Free Brewery Tour x 2 + Free entry to a 3 Brothers Beer Festival x2.

The Fastest Finisher will be determined by the first person to send a photo of themselves handing in their map and posting to Darlo CAMRA's Facebook page or Instagram account. For the record, participating pubs are: **Darlington:** House of Hop, Quakerhouse, Crafty Merlin, Vesuvio, Britania, Travellers Rest (**Cockerton**), Orb, Snooker Club, and the Half Moon. **Manfield:** Crown.

Barnard Castle: Old Well, Golden Lion. **Newton Aycliffe:** Turbinia, Steam Machine.

Happy travelling!

Beer Scoring... Why It Matters

Back in 2020 the Branch ran a survey, part of which asked if people score their beers in CAMRA's WhatPub website. Out of 133 responses, only 26 score their beers on WhatPub. Reading the comments on why people don't score their beers, the answers fall into three general categories: those who didn't know they could, those who just want to drink the beer and socialise, and those who don't think they know enough about beer to comment.

For the first group, hopefully this article means you're now aware! For the 2nd group, we understand that. But at the same time, to score a beer takes a matter of seconds and can be part of your socialising as you talk to those you're with about the beer. Given the size of the Branch area, it is impossible for us to visit every pub regularly. This means that beer scores and your comments are our best way of finding out what is happening. There may be a pub that has stopped selling real ale, or hopefully one that has started. There may also be cases where beer quality is falling and we may wish to help a pub improve. But most importantly beer scores are a big factor in determining which pubs make it into the Good Beer Guide. **In an ideal world**, for a pub to be considered it needs an average score of 3 or more across at least 3 different scorers. The GBG list is also what we use for shortlisting the Branch Pub of the Year award. For everyday coring, the system is a lot simpler than you might think—just a score from 0 to 5 (half points are allowed), so get the WhatPub app on your phone and let us know what you find.

Thanks in advance!

0. No cask ale available.

1. Poor. Beer that is anything from barely drinkable to drinkable with considerable resentment.

2. Average. Competently kept, drinkable pint but doesn't inspire in any way, not worth moving to another pub

3. Good. Good beer in good form. You may cancel plans to move to the next pub.

4. Very Good. Excellent beer in excellent condition

5. Perfect. Probably the best you are ever likely to find. A seasoned drinker will award this score very rarely.

data.beerscoring.org.uk.



CHRIST CHURCH CONSETT

PRESENTS

FIX THE CLOCK FESTIVAL

October 20th - 22nd

Friday 12-5.30pm / 6-11pm
Saturday 12-5.30pm / 6-11pm
Sunday 12-5pm Free Entry

15 ALES - 5 CIDERS- LIVE MUSIC - TASTY FOOD

FOR MORE INFO FACEBOOK CHRISTCHURCHBEERFESTIVAL

Tickets available via Facebook, Church or Grey Horse
ALL FUNDS RAISED GO DIRECTLY TO THE FIX THE CLOCK FUND.

Smiley happy people having fun at the 41st Durham Beer Festival



The Answers Bit

Grand Spring Quiz 1. Malawi 2. Lincoln Handicap 3. common cold 4. USA & Canada 5. Oxford 6. Buddleia 7. 1964 8. Crocodile 9. Iceland 10. Quisling

Picture Quiz 1 Blue Bell, St John's Chapel 2 Three Bridges, Durham 3 Shoes, Gilesgate 4 Dun Cow, Durham 5 Joiners Arms, Hunwick 6 Waiting Room, Durham 7 Pack Horse, Stanhope 8 Woodman, Durham 9 Ye Old Elm Tree, Durham 10 Bay Horse, Bishop Auckland

THE AWARD WINNING MAXIM BREWERY

The home of Double Maxim

DOUBLE MAXIM
PREMIUM BROWN ALE
ESTD 1840

SWEDISH BLONDE
ESTD 1840
Anne's Fruity Hoppie Ale

MAXIMUS
STRONG PREMIUM ALE
ESTD 1840

BBI 2016

SIBA
SMALL PACK BEER COMPETITION 2016
Gold

SIBA
SMALL PACK BEER COMPETITION 2016
Gold

~ TO THE WORKERS ~

**THERE ARE STILL SOME FIRES
BURNING BRIGHT IN CONSETT**

THE GREY HORSE

HOME OF



The Grey Horse, 115 Sherburn Terrace, Consett, Co. Durham, DH8 6NE.
Telephone: 01207 591 540 www.consettaleworks.co.uk

