



CAMPAIGN
FOR
REAL ALE



Issue 142

Spring 2023

*Free! Please
take one*

Durham Drinker

Inside...

- Durham Beer Festival dates fixed
- Pub and Club of the Year results
- Good, Bad, and Ugly news from our pubs, clubs, and breweries
- Road Trip—The Tamworth Two
- Take the bus—£2 fare scheme extended



Hello and welcome to issue 142 of Durham Drinker.

The current economic crisis continues to hit the hospitality industry, meaning that pubs, clubs, brewers, and cider makers need support from the government more than ever. With the budget fast approaching, CAMRA is urging its members to use their email to make a difference. See page 14 and 15 for more details. We've lost a couple of pubs recently, but also gained one or two, and we've had a couple of venues stop selling real ale while a couple of others are giving it a try. Brewery-wise, the smaller ones are suffering nationally as they lack the financial clout of the big companies to cover rising utility bills—one industry insider lists 83 that closed in 2022. Further evidence, if it's needed, that the industry needs help from government

While you're seeing other pages for details, have a look at CAMRA's take on the extension of the £2 bus fare scheme on page 16. Basically, use the bus to get to the pub—it couldn't be more simple—and home again.

The Station House in Durham finished CAMRA's national Pub of the Year competition as runner-up to the Tamworth Tap—a tremendous achievement.—and the results of this year's CAMRA Durham competition can be found on page 13. If your local isn't among those mentioned, remember it's all down to the members voting.

For the last couple of years, we've been having a Wednesday Wander (and the occasional Saturday Saunter), with our recent events around Chester Moor and a return visit to Spennymoor proving very successful. In March, we've decided to replace this with a visit to the Coxhoe Beer Festival on Thursday 23rd. For those of you who are fans of beer from the wood, they'll be featuring four local ones—Maxim Brewery's Double Maxim and Maximus, Ouseburn Porter, and Hadrian Border Secret Kingdom. Why not join us to get the festival off to a good start, and if you're feeling generous, you could always sponsor a beer—contact Nick Young at young.coxhoe@btinternet.com or 07880748385 for details.

And finally, Durham Beer Festival planning is underway, with dates now fixed for August 30th to September 2nd—Wednesday to Saturday - at Durham City Rugby Club. See you there.

Cheers, *Paul Dobson*

The Half Moon, Durham

Award winning traditional British pub in the heart of Durham city, with listed features including the back bar and fireplace, fitted in 1905.

A large riverside courtyard partially covered with a retractable roof down by the river Wear.

Cask Marque approved real ales, including Bass & Landlord, a member of the Timothy Taylors champion club, and included in the GBG for many years

Full sports package with 4 TVs inside and 6 outside.

Dog friendly inside & out



New Elvet, Durham, DH1 3AQ

0191 3741918



Pease like our Facebook page and follow us on Instagram for latest news and info.



Diary Dates

Wednesday March 8th, branch meeting at the Pollards, Bishop Auckland 7:30

Wednesday March 8th to Sunday March 12th, Station House Durham beer festival

Saturday March 18th a grand day out - trip to Ferrhyhill Station, Durham, and Consett. See website calendar for details

March 23rd-26th Coxhoe Beer Festival, Village hall 11am to 10:30pm

Wednesday 22nd March to Sunday 2nd April JD Wetherspoon Spring real ale festival

March 29th– April 1st Newcastle Beer Festival, Northumbria University

Thursday April 13th - Branch AGM, the Station House, 7:30pm

April 21st-23rd Members Weekend, Octagon Centre, Sheffield

April 26th– 30th Surtees Arms Beer Festival, Ferryhill Station

August 1st–5th Great British Beer Festival, Olympia, London

Wednesday August 30th–
Saturday September 2nd, Durham Beer Festival, City Rugby Club

COXHOE VILLAGE HALL

BEER FESTIVAL

Sponsored by
INTEGRA 61

Supported by
Durham Camra

MARCH

23 -26

ENTRANCE

£2

INC A GLASS

4 ales from the wood



At least

21

HAND PULL REAL ALES
AND 4 CIDERS AND FOOD
EACH DAY

ALL BEERS £3 PER PINT

11AM - 10.30PM

CAMRA Durham committee

Chairman & Public Affairs Officer: Paul Dobson

Vice Chairman: John Collinson

Treasurer: Neil Shaw

Secretary : Steven Spencer

Membership secretary: Vacant

Durham Drinker, publications, & campaigns: Paul Dobson

Apple Rep (cider) Chris Mansfield

Pubs officer: Dave Thornton

Website & Social Media: Neil Shaw

Social Secretary: Neil Cleall

Pubs Preservation: Peter Jones

Pub Promotions and Awards Coordinator:

Pub Protection Officer: Peter Lawson

GBG submissions: Peter Jones

Environment Officer: Vacant

Brewery Liaison Officers

Durham: Neil Shaw

Consett Ale Works: John Collinson

Hill Island: David Thornborrow

Yard of Ale: Arthur Corner

Weard'Ale, George Samuel, North Pier, McColl's: Paul Dobson

Castle Eden: Arthur Corner

Hopper House Farm: Peter Jones

South Causey Richard Fletcher

Caps Off: Paul Dobson



***Take advantage of
Durham Drinker's competitive
advertising rates.***

***Quarter page £35, half page
£55, or full page £100.***

***Discount for taking out one
year's worth (4 issues)***

***4,000 copies distributed across
County Durham's pubs and
clubs, and anywhere else our
members are visiting.***

Contact us at:

publications@camradurham.org.uk

pubsofficer@camradurham.org.uk

Find us at:

www.camradurham.org.uk

And Facebook, and Twitter

A message to you, reader

As branch secretary I am just looking forward to the AGM and have been making arrangements. Part of these duties are to email the committee and see who is thinking of re-standing, who wants to change roles, and who knows somebody who might fancy helping to run the branch.

This is important because it will shape our socials, meetings, campaigning and beer festival for the coming year, as well as ensuring the branch continues. I have sent an email to the branch asking if anyone wants to be more involved and until this year I have always been optimistic that somebody will come on board. Sadly, this year, I am not.

I am involved in several organisations that run due to volunteer time and good will. It seems that since Covid, for a whole variety of reasons, people are less willing to come out, less able to give their time and ultimately that organisations like CAMRA, which rely on volunteers, are struggling.

There are of course good reasons for this in some cases; we all know that general health has gone down hill and waiting lists are astronomical. This however does not explain the whole effect. I and others are genuinely perplexed by the lack of people coming from our circa 700 membership to join in. After all, all 700 joined CAMRA, so presumably they enjoy drinking ales, or may have more of an in-depth interest and the benefits of doing group activities are many fold, not least on mental health. This is quite apart from the fact that joining in with your branch is fun.

So, my question is, why not join CAMRA if you are not a member and if you are, why not join in? Come to a meeting, come to a social, volunteer at the beer festival, or to organise the festival, or indeed to do any role - that can be organising a single branch social up to being on the committee. If more of you don't come forwards branches like ours will wither and all the things we do will stop. This is not a cheery thought, but it is a real one.

We want a branch that has even more socials, a really welcoming and modern festival, to have speakers at our meetings, to do brewery visits, to link with other branches and to campaign strongly in our area for pubs, clubs and breweries. To do that, we need you. Email secretary@camradurham.org.uk to volunteer for any role, big or small, or simply come along to the next meeting or social.

With best wishes for happy drinking,

Steven Spencer – Branch Secretary





DUN COW WITTON LE WEAR

- *Original country pub*
- *No Juke box, no pool*
- *Premium cask ales and lagers*
- *Open fires*
- *Outside seating , with patio for dogs*
- *Closed Mondays, 6-11 Tue-Fri, 1-11 weekends*
- *01388 488294*



Real Ale at **WETHERSPOON**



The Stanley Jefferson

**5 Market Place,
Bishop Auckland,
DL14 7NJ**

01388 452830



The Grand Electric Hall

**2 Cheapside,
Spennymoor. DL16 6DJ**

01388 825470



The Horse Shoe Inn

**4 Church Street,
Crook, DL15 9BG**

01388 744980

The Victoria Inn, Witton le Wear

- Three cask ales, two rotating to include local and national ales
- Dogs welcome
- South facing beer garden
- B&B available
- Over fifty gins and whiskies
- Open 6 nights (not Monday)
- DL14 0AS



THE STAPYLTON ARMS HAWTHORN VILLAGE – SR7 8SD



Comedy Nights, every month - check our Facebook page for details.

Quiz Night - Thursday

Full menu served Wed-Sat

Fantastic Sunday Lunches



**Durham CAMRA Country Pub
of the Year Runner-up, 2022**
0191 527 0778



YE OLD ELM TREE

**Winner CAMRA
City Pub of the
Year 2023**



**Traditional Pub
and one of Durham's
oldest inns.**

**Friendly and inviting,
we welcome locals and
visitors to the city
alike.**

**10% CAMRA
Real Ale Discount**



- **5 Real Ales available with an ever changing line-up from local favourites**
- **Guest Craft Ale and Real Cider**
- **Large and fully covered beer garden**
- **Live folk music every week and monthly acoustic sessions**
- **Home of Durham's toughest Pub Quiz**
- **Traditional wood burning fire**
- **Dog and family friendly**

CITY HOTEL, Durham

84 New Elvet,

DH1 3AQ

0191 384 5325



**THE CITY
BAR & HOTEL**



sky SPORTS

BT Sport

sports TV & cocktails



10

Value for money in a very comfortable, clean & cosy room. The owners & staff really care about you

Wed, Mar 2, 2022 2:16 PM

Cleanliness	10	Comfort	10
Location	10	Facilities	10
Staff	10	Value for money	10



10 great reasons to join CAMRA

1 CAMPAIGN
for great beer, cider and perry

2 Become a
BEER EXPERT

3 Enjoy CAMRA
BEER FESTIVALS
in front of or behind the bar

4 **GET INVOLVED**
and make new friends

5 Save
YOUR LOCAL

6 Find the
**BEST PUBS
IN BRITAIN**

Get great
7 **VALUE FOR
MONEY**

8 **DISCOVER**
pub heritage and the
great outdoors

Enjoy great
9 **HEALTH BENEFITS**
(really!)

10 **HAVE YOUR SAY**

What's yours?

Discover your reason
and join the campaign today:

www.camra.org.uk/10reasons



Campaign
for
Real Ale

Pub and Club of the Year

As voted for by our members

Town: Grey Horse, Consett, runners up The Coal House, Seaham and The Little Tap, Spennymoor

City: Ye Old Elm Tree, runners up Victoria and Station House

Country: Surtees, Ferryhill Station, runners up The Beamish Mary, No Place, and The Three Horse Shoes, Leamside

Club : Chester Masonic Centre, runners up Tanfield Lead WMC and Durham City RFC

Cider: Station House, Durham, runners up The Grey Horse , Consett, and The Holy GrAle, Durham

Congratulations to all our winners, who will now battle it out to see which will go forward to the Regional competition.



HELP, PLEASE!

The urgent need for government support for pubs was highlighted with the release of new figures showing the rocketing number of locals going bust.

Pub and bar insolvencies have increased by 83 per cent in the past year, from 280 in 2020/21, to 512, say accountants UHY Hacker Young.

Pub and bar companies have faced increasing costs and concerns over falling sales. Energy prices have soared and hit pub companies' wallets hard throughout the winter after the government removed support for businesses' energy bills. The cost-of-living crisis, including interest rate rises, has impacted consumer habits, making them less likely to spend on non-essentials, including a drink or a meal at a pub. Rail strikes have also prevented many customers from travelling to pubs in town or city centres.

At the same time, inflation has pushed up the prices pubs need to pay for beer and food. Following a difficult pandemic period, many pub and bar companies have very little by way of savings or capacity to borrow more. For some pub company owners, the current economic downturn has been the final push into insolvency.

UHY Hacker Young partner Peter Kubi said: "It's deeply concerning that so many pubs and bars are closing their doors. In addition to the financial consequences for owners and employees, the loss of a pub can be felt quite keenly by the community. This is a particularly difficult period for pub and bar owners, who find they need to spend more and more while earning less and less. Following an extended period of lost revenues during the pandemic, the cost-of-living crisis has been the final nail in the coffin for many. Perhaps the government should consider what it can do to alleviate pressures, for instance, by extending the energy bill relief scheme for the hospitality sector."

CAMRA is urging people to campaign to save their pub. CAMRA's one-minute lobbying tool matches people with their local MP and gives them a template email, making it easy for people to join the campaign to save their locals. The tool is available at: <https://camra.e-activist.com/page/121106/action/1>

In the last 6 months of 2022, 554 pubs closed for business or stood empty without tenants, recent statistics from CAMRA reveal

CAMRA is calling on the Prime Minister and Chancellor to put together a support package to save the UK's pubs after new figures showed that 21 pubs a week are closing for business or losing their licensees.

Pub closure statistics revealed by the consumer organisation for the period July – December 2022 show that 554 pubs in Great Britain are now classed as 'long term closures', meaning they have gone out of business or are standing empty.

The shocking statistics have prompted CAMRA to call for the Government to invest in a dedicated support package to save local pubs which are at the heart of communities up and down the country.

Beer drinkers and pub goers are being asked to contact their MP to ask them to support action to save pubs in the Government's Spring Budget.

Commenting on pub closure figures for the last half of 2022, CAMRA Chairman Nik Antona said:



"These figures should be an urgent wake-up call for the Government. Without a support package in the Spring Budget, we risk losing more pubs which are at the heart of community life and play such a crucial role in bringing people together and tackling loneliness and social isolation. With the cost of doing business rocketing, energy costs sky-high and customers tightening their belts it is little wonder that hundreds of pubs across the country are closing for business or are standing empty. We know that the licensed trade can thrive and drive growth in the economy, but only

if the Government acts quickly.

That's why CAMRA is calling on all pub goers to join our campaign for urgent help to save our pubs which includes giving more help with energy bills from April, making the business rates system fairer for pubs and cutting tax on draught beer and cider by 20% to give our locals a fighting chance to compete with the likes of supermarket alcohol."



Get on the Bus, Gus!



The £2 fare cap on buses in England has been extended for three months and is welcomed by the Campaign, saying people should take one to the pub.

The cap applies to more than 130 bus operators outside London, and had been due to expire on March 31st, but has been extended until the end of June.

Bus operators have been struggling to maintain service levels in the face of rising costs and passenger numbers not recovering to pre-pandemic levels. The cap was introduced partly as a cost of living measure but is also meant to encourage people back on to buses. CAMRA has welcomed the decision as it will help people get to and from the pub, and should encourage folks to try more of our rural pubs — bus services permitting.

CAMRA national chairman Nik Antona said: “Cheaper bus fares are great news for the beer and pub trade, making it affordable for people to go out to visit their locals. Extending the £2 bus fare scheme for England is something that we had called on transport ministers to do so pubs, social clubs, breweries and cider producers grappling with the cost-of-business crisis can benefit from people being able to get to the pub in an affordable and environmentally friendly way.

We’ll be raising a glass to this decision and we look forward to meeting with bus minister Richard Holden in his North-West Durham constituency soon to show how the £2 bus fare can benefit pub-goers and hospitality businesses alike.” This meeting was scheduled for February 24th, but had to be moved as other parliamentary business took precedence—so watch CAMRA Durham’s social media for updates on the new date.



Tamworth Tap -CAMRA National Pub of the Year 2022

When I first heard of the market town of Tamworth I didn't really have any idea of its location (14 miles north-east of Birmingham) but for some reason I knew the name 'Tamworth' - the famous 'Tamworth Two' pigs that escaped from a lorry en route to an abattoir in January 1998. They went on the run for more than week, were named Butch and Sundance, and the BBC even made a film about them in 2003 titled 'The Legend of the Tamworth Two'.—watch it if you can. I wonder what became of them?

The Italians were the earliest recorded inhabitants of Tamworth, arriving there about 2,000 years ago after marching along Watling Street. Apart from dropping plenty of bits of pottery they've left little evidence, but there are a few pizza shops these days. King Offa built a palace in Tamworth and a wall along the English-Welsh border- more an earthwork than an actual wall, and certainly not up to Italian standards.

Then the French arrived, claiming that we'd reneged on the deal for them to get the English Crown, with some bloke called Harold getting it. Today, they'd just blockade the ports and prevent us going on holiday – back then they turned up en masse for a proper scrap. We were up to the job but in typical fashion they arrived when our guy was otherwise engaged (in a scrap with the Vikings). It still might have gone our way, because with the wisdom of age, Harold's mam (Gytha Thorkelsdóttir) advised him to 'had yer pash' (northern speak for don't be so hasty) but no one ever listens to their parents. If there's one thing children remember from their history lessons it's the year 1066, and the famous advice from Harold's trusted advisor: "Watch that bugger messing about with the bow and arrow -he'll have someone's eye out!"

After the battle the French employed someone called Norman' to knock up a few castles, and Tamworth got rather a nice one. It has been remodeled several times but still occupies its lofty position above the River Tame, and the splendid beer garden of the Tamworth Tap.....hold on, I'm getting ahead of myself here.

We've been going to Birmingham NEC for a number of years, to the Caravan and Camping Shows, and Tamworth Premier Inn has free parking with a pleasant 10 minute stroll to the town centre. We went, as ever, with the intention of purchasing either a caravan or a campervan, last October.

Tamworth is a small town with a surprising number of pubs serving real ale. There is a Market Hall with a statue outside of local resident Sir Robert Peel who was twice Prime Minister and created the modern police force. Less famously, but good for the pub quiz, he was the first serving British Prime Minister to have his photograph taken and is also on the cover of The Beatles' Sgt. Pepper's Lonely Hearts Club Band album...AND is responsible for producing the Tamworth breed of pig! Of course, there's a pub, the Sir Robert Peel on Lower Gungate, usually serving five real ales, and it's a recommended visit, offering CAMRA members discount.

There were once two Wetherspools, but the 'Silk Kite' closed in 2016. It's still a wonderful Art Deco building, built as the showroom for the Tamworth and District Electricity Supply Company. The Wetherspoon name was in memory of the former electricity showrooms, recalling Benjamin Franklin's kite-flying experiment of 1752.

In Wetherspoon style, the interior carried information on the building's past but also snippets of modern day history, including the story of the Reliant motor company, founded in 1935. The remaining Wetherspoon's is named the Bole Bridge after an ancient pack-horse bridge which disappeared in 1877.

The local CAMRA branch, Lichfield, Sutton and Tamworth, have an informative website and an excellent Tamworth Town Ale Trail leaflet highlighting a good selection of pubs to visit, all just a few minutes' walk from each other.

Personal favourites are the King's Ditch, a micropub near the Sir Robert Peel. Up to six handpulls, but also with up to 30 ciders and perries -and a finalist in CAMRA's national Cider Pub of the Year several times. Opposite the Tamworth Tap we would also recommend the Market Vaults, a building originating from the 14th century with three or four handpulls.

But, finally, to the main event, the Tamworth Tap, recent winner of CAMRA National Pub of the Year 2022 just ahead of Durham's Station House. Opening just five years ago, it's grown from a single shop frontage housing the brewing equipment with a small drinking area, to the now expanded drinking area.

The elegant building dates from the 16th century, with a very nice courtyard to the rear - a summertime sun trap with views of the castle. The owners, George and Louise Greenaway, often organise music or film events out there. Inside is a central bar with seating pleasantly arranged around the room, near the wood-burning stove, in small cosy areas. There were eight handpulls on offer on our visit, with LocAle beers and a choice of well-thought out others, with styles to suit most tastes. Outside our normal drinking area I usually struggle to identify what and where they're all from, but the enthusiastic staff are more than willing to explain, make suggestions, and offer samples. The bar area extends into a corner which has been turned into what can best be described as a mini Belgian bar, complete with an eclectic range of memorabilia and Belgian and foreign beers. At the rear there is a bookcase high on the wall boasting a complete set of



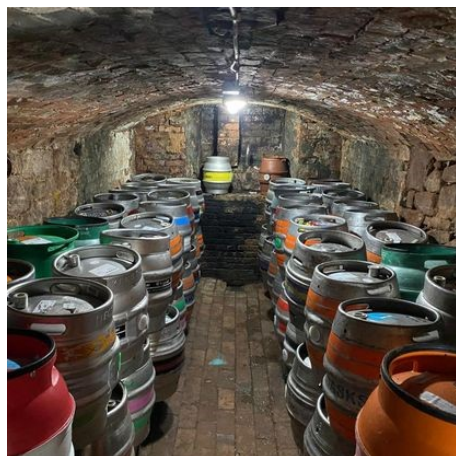
Good Beer Guides. Personally, I purchase a new guide each year and move along the previous edition, but some Durham CAMRA members are still on the lookout for earlier editions to complete their collections. Naturally, I sent them a photograph to show them what a complete set looks like.



Another area has been turned into CAMRA Corner, with leaflets or posters advertising CAMRA events and beer festivals, other branch magazines: a mini-library of CAMRA information - an excellent idea. As we were depositing our Durham Drinkers we picked

up a few others to bring home, and owner George stopped to chat, interested in what we had brought and where we were from. They had just won the West Midlands Regional Pub of the Year and he instantly mentioned Durham's own Station House, also in the running for National Pub of the Year. From CAMRA Corner, a staircase from leads to more cosy upstairs rooms.

Our first night in Tamworth was supposed to be quiet as the next day was an early start to NEC, but the staff liked to know where people were from, and the other drinkers were more than chatty. We considered a wander round the town to see if the pubs had changed, but we stayed in the Tap all night.



The Victoria Inn



**Five cask ales
En-suite B&B**



- Durham's only CAMRA National Inventory listed pub
- Whiskey and Whisky galore!
- Grade 2 listed by English Heritage
- A dozen local and regional CAMRA awards
- Atmospheric and friendly bar
- Private car park
- Dog friendly



Hallgarth Street, Durham DH1 3AS

01913865269

mwebstervictoria@gmail.com

We weren't too late arriving at the NEC, but well tired when we got back to Tamworth. After walking several miles around the various displays, it was back the Tamworth Tap with no intention of walking anywhere else. The staff enquiring about our day, had we purchased a new caravan or campervan, us enquiring about the new beers that had appeared, and the same willingness of the staff to explain. Thus it was a second night in the West Midlands Regional Pub of the Year 2022. Little did we know it was to become CAMRA National Pub of the Year 2022.



On our last day, we found a good breakfast at The Deanery, next door to one of those 'proper' butcher's shops that are hard to find. Tamworth still retains its market which had attracted quite a few people and there are still quaint shops, such as an Arkwright-esque hardware store. We wandered into the interior of the castle which has a park and gardens complete with bandstand. There was an archaeological dig which was being enthusiastically tackled by children who clearly were enjoying it but producing more

noise than artifacts. Eventually we drifted away, walking back over the bridge over the River Tame and back to the Premier Inn, wishing we had booked a third night – we'll definitely return, both to Tamworth and the Tap.

The CAMRA Tamworth Beer Festival is on Thurs 7th to Sat 9th Sept 2023. Can we make this?

Cheers, Chris & Wendy

PS. Butch and Sundance escaped the abattoir, the Daily Mail newspaper paid for them to live in a Rare Breeds sanctuary, and Butch (the girl pig) died in Oct 2010 followed seven months later by Sundance (the boy pig).

And, finally, on that visit to the NEC, and after many previous visits, we purchased a campervan.



THE GOOD THE BAD AND THE UGLY

- The Gate, at Framwellgate, will have reopened on March 2nd by the time you read this, after a short closure. There will be two real ales on offer.
- The Manor House at Ferryhill has re-opened, and is serving Camerons Road Crew
- Kennedys, on Bondgate in Bishop Auckland has reopened, but there's no real ale, while across the street Antics, formerly Finnegans, has opened but also with no real ale
- Katie O'Brien's Irish Tavern has opened on Walkergate in Durham—no real ale
- The Queens Head in Shildon is reopening
- The Post Boy in Ferryhill has reopened - no real ale
- The Westlea Sports Bar in Seaham has renamed the Golden Grove Inn, and has real ale



No more real ale at:

- The Bishops Lodge, Toronto
- Elm Road Club, Shildon
- The Fighting Cocks, Durham



The Miners Arms at Medomsley has closed

The Welcome in Bishop Auckland has closed while new operators are sought



What's that all about?

LocAle – have you even heard of it? Probably not, unless you are some sort of CAMRA aficionado. Well, you can find stuff about it at <https://camra.org.uk/beer-and-cider/beer/locale/> To save you looking, here's what it says

CAMRA's LocAle initiative promotes pubs stocking locally brewed real ale in order to reduce the number of 'beer miles' from brewery to pub cellar in response to growing consumer demand for quality local produce.

In today's climate that sounds pretty good, especially when it goes on to highlight some of the other benefits of pubs stocking locally produced real ales

- Pubs can attract more visitors through their doors, including tourists seeking out distinctive local products.*
- Consumers can enjoy greater beer choice and diversity.*
- Brewers are supported with increased sales, creating more local jobs.*
- More money is generated and spent locally, increasing the resilience of the local economy.*

The initiative started way back in 2007 and included beer mats, pumpclips, posters and window stickers for pubs which were accredited as regularly stocking locally produced real ales. Like all well-meaning initiatives though, it needs effort to co-ordinate identifying the pubs offering the product, the breweries producing and supplying the qualifying product and making CAMRA members and the general public aware of where they can enjoy it.

Volunteer effort is often one of the things difficult to get in any organisation, and CAMRA Durham is no different in that respect. At one time we had a very active 'Locale Co-ordinator' who was very good at this but they moved on some years ago.

CAMRA centrally leaves it up to the local branch to decide what it defines as a 'LocAle beer' and the branch at some stage chose an arbitrary thirty mile radius of Durham City but that has been interpreted fairly loosely to encompass North East brewed beers. It also makes sense to say "thirty miles from the pub it's being served in", especially if you're up the top end of Weardale. Durham City is hardly at the centre of the branch area (geographically at least) but does have the evident advantage of bringing in breweries in neighbouring branch areas. Whether that's still the appropriate definition is a matter of conjecture with so many new breweries compared to when the scheme was set up. Should there be more emphasis on breweries on our own branch area for example?

At the end of the process I as pub data co-ordinator marked and kept up to date in WhatPub which pubs were accredited according to the criteria set by the branch as provided by the LocAle co-ordinator so it was easy to find the relevant pubs, and a symbol also appears in the Good Beer Guide entries.

The point of all this is to say the data is pretty much out of date now and if there is anyone out there with an appetite for helping to revamp the scheme in the branch I would be very glad to hear from them at pubsofficer@camradurham.org.uk

Serving a local beer can be a good marketing point for a pub, especially in a tourist area such as County Durham – pubs, breweries, other local businesses, and the tourism office ought to be interested. Sometimes it is not the fault of the pub that they do not offer it but that they are tied by the pub company who control what they are allowed to buy. This is in fact a particular issue in Durham City where there are many real ale outlets but relatively few are independent, making it quite difficult to find local beers with the commonest probably being Maxim and Camerons - good beers but neither brewery is in the Durham branch area.



I had a quick search on WhatPub and it currently identified 7seventy Durham branch pubs as LocAle accredited, which no doubt includes some which shouldn't be accredited and misses others which should be included.

This convoluted link identifies them - but it isn't as difficult as it appears to search for them actually using WhatPub!

<https://whatpub.com/search?q=durham+%28camra%29&t=b&p=1&code=DUR&features=PubClub%2COpen%2CLocAle>

Grand Spring Quiz

nee Googling, mind



*Answers inside back page **f** from p63*

- 1 Name the six USA states surrounding Utah
- 2 Name the six soldiers regularly under the command of Captain Mainwaring
- 3 Napoleon regularly had one sleeve of his coat pinned to his chest. Which arm had he lost?
- 4 What was the title of the first Carry On film?
- 5 How many time zones are there in the world?
- 6 Of the six ancient wonders of the world, which is the only one that still exists?
- 7 What is a Zimocca?
- 8 What is the oldest “classic” horse race?
- 9 Which Oxford college was founded to provide education for “working people”?
- 10 Which two nations are separated by the 49th Parallel?
- 11 When does a ship hoist the Blue Peter?
- 12 Who wrote the Inspector Morse books?
- 13 Which is longer, a nautical or a land mile?
- 14 Which plant is commonly called The Butterfly Bush?
- 15 What is Switzerland subdivided into?
- 16 What is Britain’s largest carnivore (apart from humans)?

Discount

Various pubs across the county offer discounts to CAMRA members (make sure you take your membership card). The offers available, as known to us in November 2022, are:

- Green Tree, Bishop Auckland: 10p off pint, 5p off half cask ale on production of valid CAMRA membership card
- Red Lion, North Bitchburn: 20p off pint cask ale for CAMRA members
- Pack Horse, Burnopfield: 10% off real ale for card carrying CAMRA members
- Grey Horse, Consett: 10p off a pint on production of valid CAMRA card
- Duke of Wellington, Durham: 20p off a pint of cask ale for CAMRA members.
- Elm Tree, Durham: 10% off real ale on production of valid membership card
- Head of Steam, Durham: 20p off a pint of cask ale for card carrying CAMRA members
- Market Tavern, Durham: 10% off real ale for CAMRA members.
- The Waiting Room, Durham 5% discount on cask ales (not keg) on production of valid CAMRA membership card
- Crow's Nest, Seaham: 10% off cask ale on production of valid CAMRA membership card
- Hare and Hounds, Westgate: First two pints of Weard'Ale beer half price with an evening meal or Sunday carvery. Table must be booked in advance.

In addition, all CAMRA members currently receive £30 of CAMRA vouchers redeemable in the form of 50p off a pint of any cask ale nationally in many pubs. Full details of the scheme can be found on [CAMRA's website](#). In the Durham Branch area these are pubs operated by the Wetherspoon, Stonegate and Amber Taverns pub companies.

Stonegate pubs in our area are the Library, Durham, The Three Bridges, Durham, the Whitehills, Chester-le-Street, and the Chester Moor. Amber Taverns in our area sell real ale at the Three Stories in Peterlee

If you are aware of any offers that aren't listed, or have any problems with the above offers, please let us know. You can find out more about these outlets by viewing their entries in CAMRA's national database whatpub.com.



Picture Quiz

can you name these local hostelries?

1



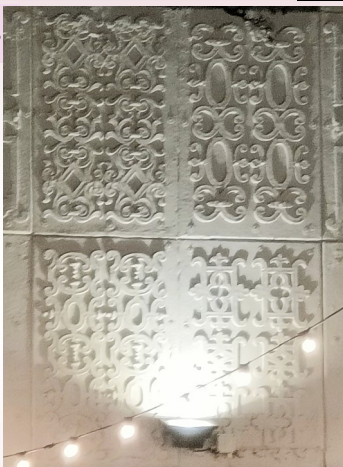
2



3



4



5



6



Answers inside back page

7



8



9



10



THE 45th ANNUAL NEWCASTLE BEER AND CIDER FESTIVAL

Over **100** Beers, **50** Ciders
Bands, Gin, Cocktails & Food Vendors

March 29th
- April 1st

**NORTHUMBRIA
UNIVERSITY**
STUDENTS UNION
NE1 8SB



www.nclbeerfest.uk

Find us on Facebook or Twitter **NCLBCF**

Call our Information line **0191 640 3436**

Proudly organised by Volunteers of Tyneside
& Northumberland Campaign for Real Ale



Scan Me to buy tickets



Campaign
for
Real Ale



THE STATION HOUSE,
NORTH ROAD, DURHAM,
DH1 4SE

OPENING TIMES:

- FRI: 2PM - 11PM • SAT: 12PM - 11PM,
- SUN: 4PM - 10.30PM • TUES - THURS: 4PM - 10.30PM,



CASK
BEER

REAL
CIDER

CRAFT
KEG

WINES
& SPIRITS



29B FRONT STREET,
FRAMWELLGATE MOOR,
DH1 5EE

OPENING TIMES:

- FRI: 2PM - 10.30PM • SAT: 12PM - 10.30PM,
- SUN: 2PM - 9PM • TUES - THURS: 4PM - 10.30PM,



What?Pub

0. No cask ale available.

1. Poor. Beer that is anything from barely drinkable to drinkable with considerable resentment.

2. Average. Competently kept, drinkable pint but doesn't inspire in any way, not worth moving to another pub

3. Good. Good beer in good form. You may cancel plans to move to the next pub.

4. Very Good. Excellent beer in excellent condition.

5. Perfect. Probably the best you are ever likely to find. A seasoned drinker will award this score very rarely.

data.beerscoring.org.uk

In national news, CAMRA's **Champion Winter Beers of Britain**

have been announced.

Category	Gold	Silver	Bronze
Brown Ales, Red Ales, Old Ales and Strong Milds	Brampton's Mild	Sarah Hughes Dark Ruby	Great Corby Fox Brown
Session Stouts and Porters	Dancing Duck Dark Drake	Thurstons Milk Stout	Beowulf Dragon Smoke Stout
Strong Stouts and Porters	Elland 1872 Porter	Fixed Wheel Blackheath Stout	Ashover Milk Stout
Barley Wines and Strong Ales	Robinson's Old Tom	Exmoor Beast	Darwin Extinction
Speciality, differently produced	Chapter's Dead Man's Fist	Black Hole Milky Way	Treens Smoulder
Speciality, Flavoured	Marble Earl Grey IPA	Purple Moose Elderflower Ale	Iren Craft Broken Dream Breakfast Stout



Campaign for Real Ale

Over 500 CAMRA members have already registered to attend next year's Members' Weekend, AGM & Conference. They're looking forward to sampling what the "World's Best Beer City" has to offer, along with meeting up with friends old and new. It'

It's on 21st-23rd April at the Octagon Centre (University of Sheffield).

What happens at Members' Weekend, AGM & Conference?

It's a social event, with brewery trips, activities and drinks in the dedicated Members' Bar on site. Saturday morning is the formal part when CAMRA holds its AGM* and in the afternoon members discuss and vote on motions at Conference. You'll also have the chance to hear from guest speakers, and take part in fringe events and talks throughout the weekend.

A full schedule will be available nearer the time and we encourage all members to register in advance to attend - so you don't miss out on important emails about booking onto the trips and activities.

"World's Best Beer City"

In his 2016 report, beer writer Pete Brown described Sheffield as "The World's Best Beer City". To test that claim, a group visiting from Essex confirmed with the local branch that they *"visited 18 pubs, and tried 20 different beers which we'd not had before. All were in immaculate condition. Everyone was friendly. We thoroughly enjoyed our trip. The claim was well and truly founded. Definitely the best place any of us have been for a beer."*

Our dedicated team of CAMRA volunteers will be helping ensure the weekend runs smoothly - but we always need more help. This could be leading up to the event (set up), pulling pints, helping at registration and around the venue or being a Conference Teller. There are opportunities for new and experienced volunteers, so have a look at the CAMRA main website for the relevant link to offer your services.

We look forward to seeing you in Sheffield next April.



The Answers Bit

Grand Spring Quiz 1. Nevada, Wyoming, Arizona, New Mexico, Colorado, Idaho 2. Sergeant Wilson, Corporal Jones, and Privates Pike, Godfrey, Walker, and Fraser 3. Neither 4. Carry On Sergeant 5. 24 6. The Great Pyramid 7. A sponge 8. St Leger 9. Ruskin 10. Canada and the USA 11. When leaving the harbour 12. Colin Dexter 13. Nautical 14. Buddleia 15. Cantons 16. Badger

Picture Quiz 1 Butchers Arms, Chester le Street 2. Half Moon, Durham 3, Wicket Gate, Chester le Street 4. Lambton Arms, Chester le Street 5. Church Mouse, Chester Moor 6. Chester Moor, Chester Moor 7. City Hotel, Durham 8. Grey Horse, Consett 9. Kings Head, Lanchester 10. Dun Cow, Witton le Wear

THE AWARD WINNING MAXIM BREWERY

The home of Double Maxim

DOUBLE MAXIM PREMIUM Quality Ale JUSTLY FAMED

MAXIM BREWERY SWEDISH BLONDE Apple's Fruity Hoppily Ale

MAXIMUS STRONG PREMIUM ALE

BBI 2016

SIBA GOLD MEDAL PICKER COMPETITION 2016

SIBA GOLD MEDAL PICKER COMPETITION 2016

TO THE WORKERS

**THERE ARE STILL SOME FIRES
BURNING BRIGHT IN CONSETT**

THE GREY HORSE

HOME OF



The Grey Horse, 115 Sherburn Terrace, Consett, Co. Durham, DH8 6NE.
Telephone: 01207 591 540 www.consettaleworks.co.uk

